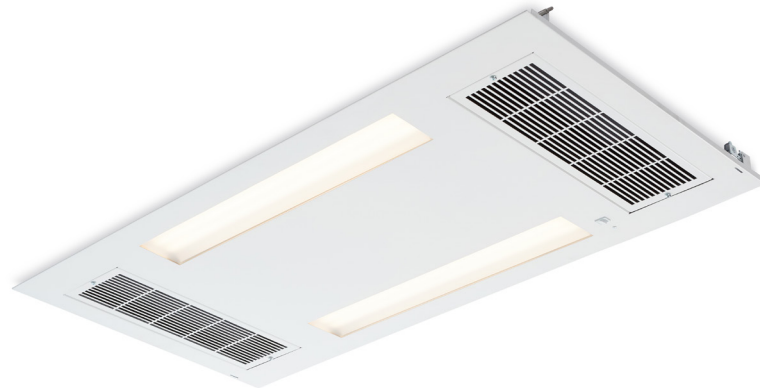


CLEANSE[®] RETROFIT TROFFER

LSH CLEANSE | AIR SANITIZING | CIRCADIAN LED | RETROFIT



FEATURES

- Multi-stage air sanitization features HEPA-Carbon activated filtration with UV sanitization
- HEPA filter captures up to 99.97% of airborne pathogens as small as 0.3 μ while activated carbon reduces gases, odors and VOC from the air.
- Easily retrofits into any existing 2 x 4 ft troffer without breaching plenum—keeping facility disruptions and installation costs to a minimum.
- Recommended 8–10 ft on center spacing, Troffer provides 800 ft³ of sanitizing coverage and conducts four air changes per hour (50cfm) for a 10 x 10 x 8 ft space.
- Advanced control features via proprietary Bluetooth wireless switch enable fan speed adjustments and dimming capabilities for general illumination.
- Choice of Healthē’s GoodDay 4000K/5000K, GoodNight 2700K or Standard 3000K.
- UV LED are safe to use without hazardous material and waste disposal concerns of a low pressure mercury UV lamp.
- For optimal sanitization performance, Healthē recommends replacing carbon/HEPA filter every 6 months and UV LED after every 2,000 hours of usage.*
- Recessed Housing Kit (ACC-07010) can be purchased separately for installation due to incompatibility with existing troffer housing or in new construction settings.

** To order replacement accessories, please contact your agent or Healthē’s customer service at 1-877-999-5742.*

Distributed by BULBS.COM
 243 Stafford Street • Worcester, MA
 01603 888.455.2800 • bulbs.com



SPECIFICATIONS*

ILLUMINATION	
Correlated Color Temperature (CCT)	GoodDay 5000K, 4000K, GoodNight 2700K, Standard White 3000K
Lumen Output	3200 lm (Max.)
Color Rendering Index	90 GoodDay 5000K, 4000K, Std 3000K 80 GoodNight 2700K
Light Distribution	Lambertian
Lifetime to L80	>69,000 Hours
AIR SANITIZATION	
Filtration	HEPA-Carbon Activated Filter captures up to 99.97% of particles as small as 0.3µ
Air Flow Rate	50 CFM (Max.)
UV Sanitization	UV LED (A+C) Activated PhotoCatalytic Purification Process
UV LED Lifetime to L50	>2,000 Hours
ELECTRICAL	
Power Consumption	60 Watts @ Illumination Mode + Air Cleaning Normal Mode 36 Watts @ Illumination Mode only (100% light output) 24 Watts @ Air Cleaning Normal Mode Only
Input Voltage	120–277 VAC
Frequency	50/60Hz
Input AC Current (Max.)	0.50A Max at 120V 0.22A Max at 277V
Control Protocol	Proprietary Bluetooth
Control	2 Options: Standard Wall Switch or Wireless Bluetooth Switch (sold seperately)
Dimming Range	5% to 100% via proprietary Bluetooth
Fan Speed Control	Speed controlled via proprietary Bluetooth
MECHANICAL	
Housing	Sheet Metal
Dimensions	24 X 48 X 2.875 in (W x L x H)
Weight	34 lbs
Finish	Powder-Coated White
Mounting	Retrofit to Standard 2' x 4' Troffer Housing Compatible Recessed Housing Kit (ACC-07010) available, sold seperately



**WARRANTY
5 YEAR LIMITED**

Distributed by BULBS.COM
243 Stafford Street • Worcester, MA
01603 888.455.2800 • bulbs.com



* Specifications subject to change without notice.

LUMINAIRE ORDERING

EXAMPLE: LSH CLEANSE 3000 MVOLT SK

Model	CCT	Voltage	Series
LSH CLEANSE Cleanse® Troffer	2700 GoodNight® 2700K	MVOLT 120-277 VAC	SK SK Series
	3000 Standard 3000K		
	4000 GoodDay® 4000K		
	5000 GoodDay 5000K		

ACCESSORIES ORDERING

Part Number	Product Description
ACC-07010	2x4 Recessed Housing
ACC-07006	HEPA/Charcoal Filter Replacement (Recommended every 6 months)
ACC-07003	UV(A+C) LED Module Replacement (Recommended after 2,000 hours of usage)

Distributed by BULBS.COM
 243 Stafford Street • Worcester, MA
 01603 888.455.2800 • bulbs.com

