



MODULAR DESIGN

THE SOLERA AREA LIGHT FEATURES A MODULAR DESIGN. The battery is built into the solar panel, and the light engine can be mounted in multiple configurations. No need for a power source, which eliminates the need for trenching & wiring. High performance solar controller maximizes solar charge under all conditions.

- Perfect for parks, parking lots, school campuses, etc.
- Advanced new LiFePO4 battery lasts at least 2000 charge cycles and will last up to three nights with one day charge (motion sensing mode)
- Compares to 250W HID
- Easily programmable via remote control (available for purchase)
- Pre-programmed to run at 80% output for 2 hours, then switch to reduced power when no motion is detected. It returns to 80% output with motion
- Built-in motion sensor, photo control & status indicator
- Exceptional cold weather performance due to low temperature battery chemistry
- For line drawings and mounting see pg. 3

2-3/8" TENON

FLEXCOLOR
SWITCH BETWEEN 3 CCTs



BATTERY CHARGE TIME

BATTERY CHARGE TEMP

BATTERY LIFE

REPLACEABLE BATTERY

TYPE III OPTICS

OPERATING TEMP

100,000hrs RATED LIFE

PART #	UPC	COMPARABLE TO	LUMENS	CCT	DIMENSIONS*	WEIGHT	EPA
SL-SAL-60L-FC-T3-BK-G3	197810015000	250W HID	6000	FLEXCOLOR 3000K/4000K/5000K	36" X 26" X 32"	45 LBS.	4.5

OPERATING MODES  TIMER  MOTION SENSING

*DIMENSIONS ARE BASED ON MOST POPULAR CONFIGURATION

LIGHT ENGINE

LED	192 LED. 3030 HIGH EFFICACY
MAX. POWER	30W
EFFICACY	160+ LUMENS PER WATT
CRI	70+
MAX. LUMENS	6,000 LUMENS
CCT	3000K, 4000K, 5000K SELECTABLE
CONTROLLER	MPPT CHARGE CONTROLLER
OPTICS OPTIONS	TYPE 2, TYPE 3, TYPE 4, TYPE 5
SHEILD OPTIONS	BACK LIGHT SHIELD, FULL CUTOFF SHIELD

SOLAR PANEL

TYPE	MONOCRYSTALLINE
WATTS	55W PER PANEL
VOLTAGE	12V
ADJUSTABLE	ANGLE AND ROTATION ARE FULLY ADJUSTABLE
CHARGE TIME	6 HOURS
DIMENSIONS	26.2" X 19.2" X 1.7"
WEIGHT	28.0 LB (INCLUDING BATTERY)
INGRESS PROTECTION	IP65

BATTERY

TYPE	LIFEPO4
CHARGING TEMP	-4° TO 140°F
DISCHARGING TEMP	-40° TO 140°F
REPLACEABLE	YES
CHARGE CYCLES	2000+
CHARGE VOLTAGE	14.6V
AMPERE-HOURS	23.5
WATT HOURS	300
WEIGHT	5.8LBS
BMS SYSTEM	ONBOARD FULL PROTECTION

AREA LIGHT ASSEMBLY

DESCRIPTION	30W / 6000 LUMEN AREA LIGHT
EPA	4.5
WEIGHT	45 LB

SOLAR AREA LIGHT ACCESSORIES

PART #	UPC	DESCRIPTION
SL-AL1-SHIELD-1	197810025320	BACK LIGHT SHIELD
SL-AL1-SHIELD-2	197810025337	FULL CUTOFF SHIELD
SL-AL1-LENS-T2	197810025344	LENS SET TYPE 2 OPTICS
SL-AL1-LENS-T3 *	197810025351	LENS SET TYPE 3 OPTICS
SL-AL1-LENS-T4	197810025368	LENS SET TYPE 4 OPTICS
SL-AL1-LENS-T5	197810025375	LENS SET TYPE 5 OPTICS

* AREA LIGHT IS SHIPPED WITH TYPE 3 LENSES INSTALLED

BRACKETS

PART #	DESCRIPTION
SL-SAL-BKT-RP-BK-G1	ROUND POLE BRACKET
SL-SAL-BKT-SP-BK-G1	SQUARE POLE BRACKET
SL-SAL-BKT-WM-BK-G1	WALL MOUNT BRACKET

STANDARD SLIP FITTER MOUNTING BACKET INCLUDED
CONTACT US ADDITIONAL BRACKET OPTIONS

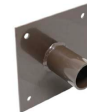
FOR USE W/ SL-SAL OFF-GRID



ROUND POLE

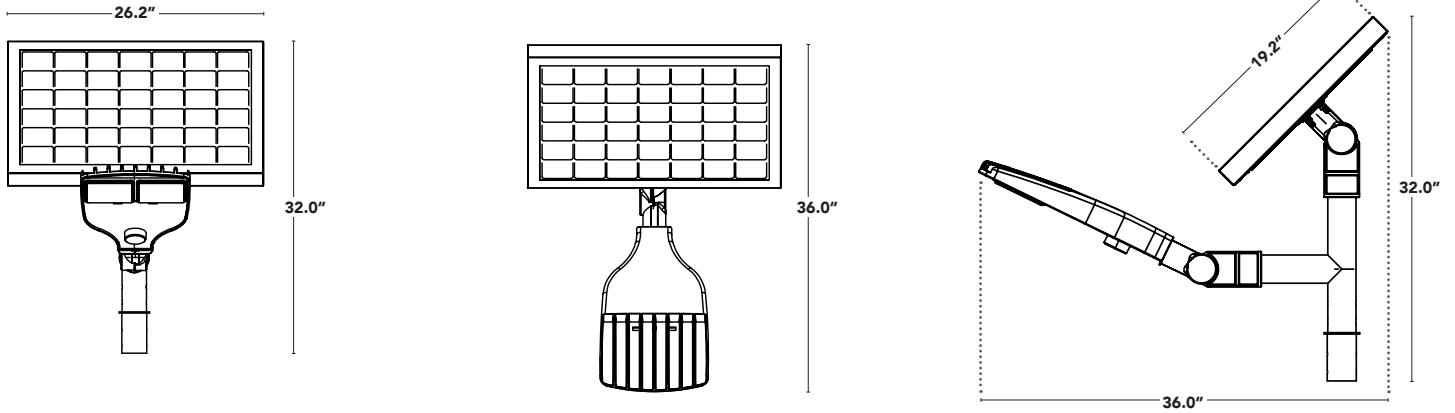


SQ POLE

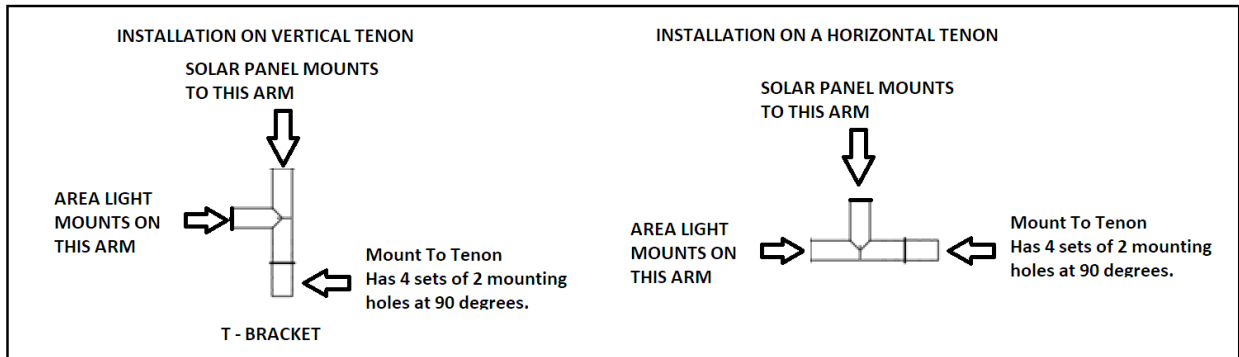


WALL MOUNT

DIMENSIONS



MOUNTING

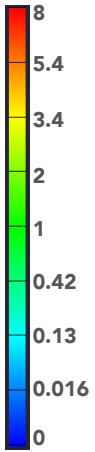


PHOTOMETRICS - DEFAULT CONFIGURATION*

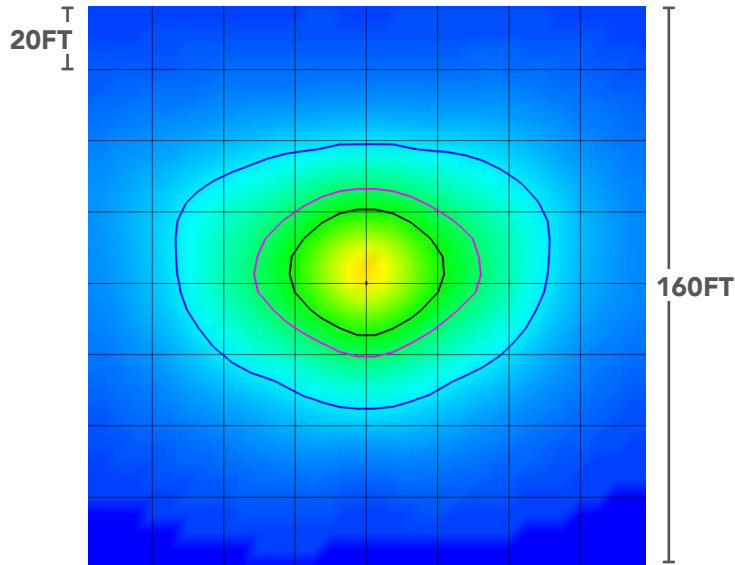
FOOT CANDLES	ISO-LINE COLOR
1 FC	BLACK
0.5 FC	MAGENTA
0.1 FC	BLUE

* T3 IS DEFAULT LENS W/ LIGHT OUTPUT SET TO 80%

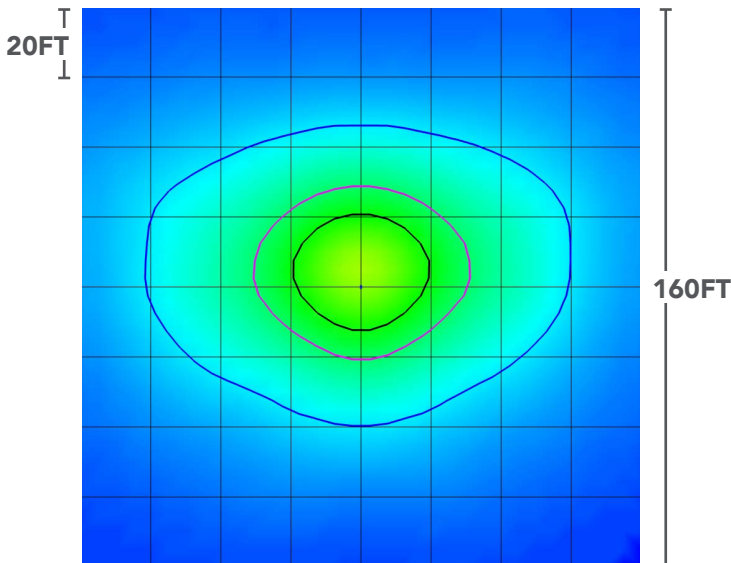
ILLUMINANCE (FC)



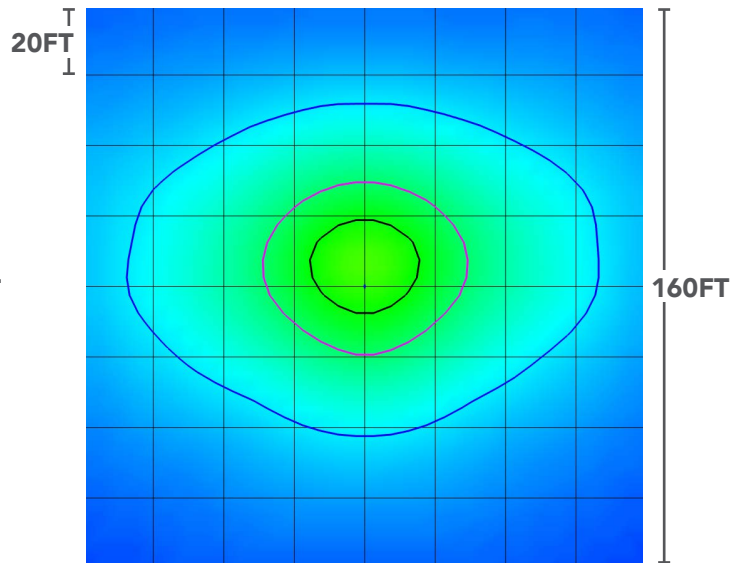
MOUNTING HEIGHT : 15 FT






MOUNTING HEIGHT : 20 FT



MOUNTING HEIGHT : 25 FT

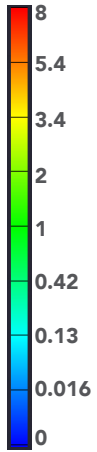


PHOTOMETRICS - OPTIONAL LENSES AND SHIELDS

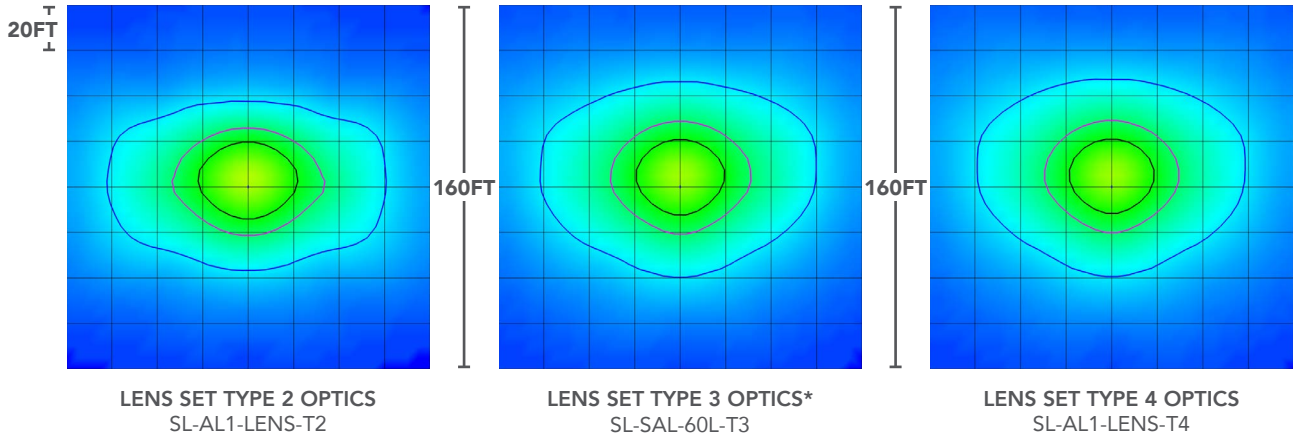
FOOT CANDLES	ISO-LINE COLOR	
1 FC	BLACK	
0.5 FC	MAGENTA	
0.1 FC	BLUE	

* T3 IS DEFAULT LENS W/ LIGHT OUTPUT SET TO 80%

ILLUMINANCE (FC)



MOUNTING HEIGHT : 20 FT



MOUNTING HEIGHT : 20 FT

