

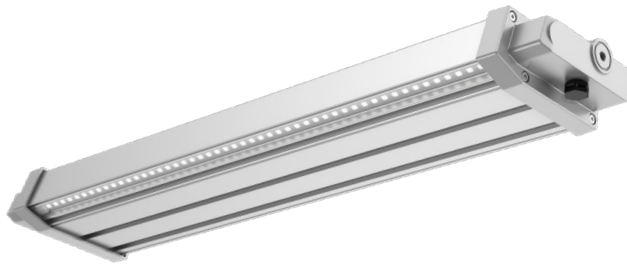
# SOLS SERIES

Outdoor Lighting

**WESTGATE**  
THE FUTURE IS HERE...AND IT'S QUITE BRIGHT!

## SOLS-PRO-2FT-50K

PRO SOLAR SIGN LIGHT WITH UNIV MOUNTING AND RC



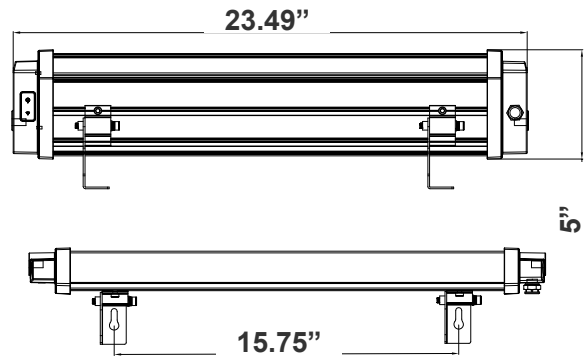
The Pro Solar Sign Light is designed to deliver reliable, energy-efficient illumination for signs, billboards, and outdoor displays. Equipped with a universal mounting system, it allows for quick and flexible installation on a variety of surfaces. The integrated solar panel charges during the day to provide consistent lighting at night, reducing energy costs and eliminating the need for hardwiring. A convenient remote control (RC) enables easy operation and adjustment of settings, ensuring optimal performance and user convenience. Built with durable materials, this solar sign light is weather-resistant and engineered for long-lasting outdoor use.

Customer Name: \_\_\_\_\_

Project Name: \_\_\_\_\_

Note: \_\_\_\_\_

Type: \_\_\_\_\_



5"(H) X 23.49"(W)

## Features

- 7-Year Warranty
- Robust Aluminum Alloy + Polycarbonate Cover
- Lifespan: 70000 Hrs.
- Lens: TYPE III TIR optic Lens

## Technical Specifications

### Electrical:

- LED Wattage: 5W
- Power Factor: 0.95
- Efficacy: 170 LM/W

### Mechanical:

- Robust Aluminum Alloy + Polycarbonate Cover
- Smart Lighting controller & remote control to charge settings (Remote is not included)
- Operating temperature: 14°F to 122°F
- IP Rating: IP65

### Battery:

- Operation on Full Charge: 6-8 hrs. Depending on the Sunlight Quality, See The Map On Page 3
- Battery Type: Lithium-ion 5200mAh
- Battery Life: More than 2000 Cycles (2000/365 days = 5.47 years) With Overcharge And Over-Discharge Protection

### Lighting:

- Lens: TYPE III Optic Lens
- Total Lumens: 850LM
- Color Temperature: 5000K
- Color Rendering Index: >70
- Lifespan: 70000 Hrs.

### Remote Setting:

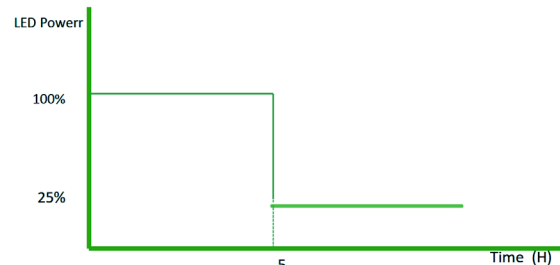
- ON / OFF – Manual power control
- Brightness (+ / -) – Increase or decrease light intensity
- ECO Mode – Activates energy-saving operation
- AUTO Mode – Automatic dusk-to-dawn function
- 3H / 5H / 8H Timers – Preset operating times (3, 5, or 8 hours)



Remote Included

### Applications:

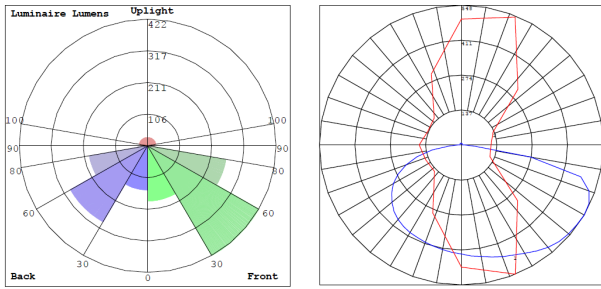
- Ideal For Ideal for Doorway, Pathway And Alleys
- Great for Use With Optional Motion Sensors or Photocell



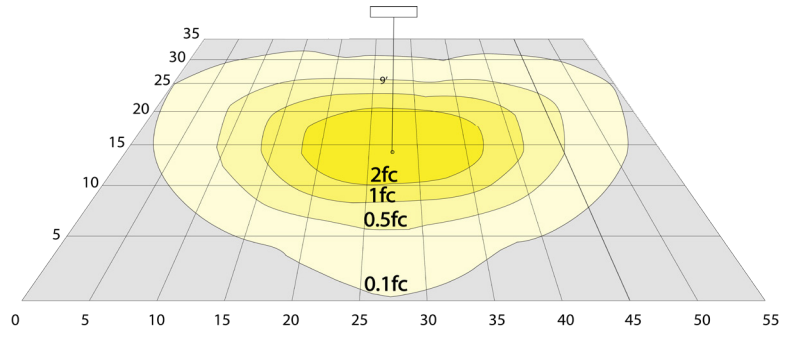
Working mode:  
Dusk to Dawn  
Full Brightness for First 5Hrs.  
Dim to 25% for 7Hrs.



**Photometrics:** SOLS-PRO-2FT-50K

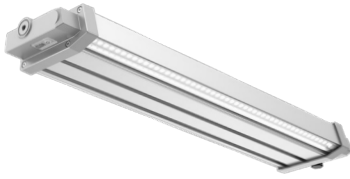


BUG Rating: B1-U2-G0

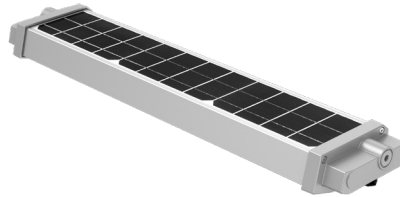


Area 35'x 55' Mounting Height: 9'

**Other Views:**



Side View



Back View



Mount View

**Performance Table:** SOLS-PRO-2FT-50K

MODEL NO.	LED WATTS	Lumens	Color Temp.	BUG Rating	LPW
SOLS-PRO-2FT-50K	5W	850LM	5000K	B1-U2-G0	170

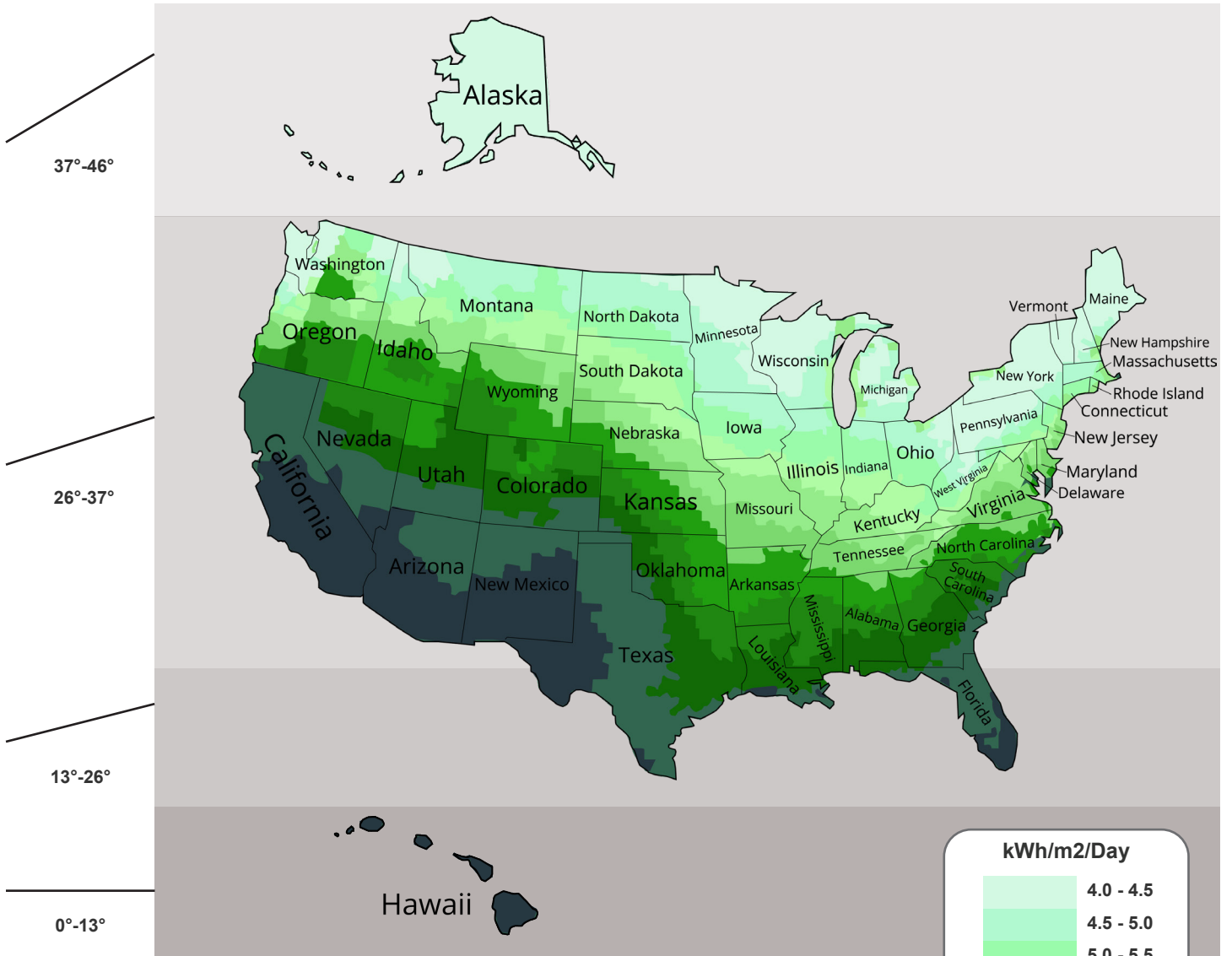
**Sample Ordering**

Model	Pro	Size	Color Temp.
SOLS	PRO	2FT	50K



## Average Daily Solar Radiation Per Month:

Increasing the tilt 15° in the winter or decreasing 15° in the summer gives the maximum sunlight for recharging the battery.



- The best facing direction for the solar panel is toward the south. facing west & east & north will provide less sunlight, resulting in a long time to charge the battery. The solar charge will be less optimal if the installation is facing north.

