



T8

14T8/COR/48-835/IF20/G/DIM 10/1

Our TLEDs are available in InstantFit (Type A / Type C) or MainsFit (Ballast bypass / Type B) versions. The InstantFit lamps work on a broad variety of ballasts and LED drivers. Only InstantFit has over 15,000 lamp & ballast combinations delivering even light output, energy savings and a long lifetime. Our MainsFit products feature a double-ended design, simplifying installation while a proprietary safety circuit minimizes a shock risk. Lamp sizes range from 2-foot to 8-foot and U-bend with a variety of lumen outputs.

Product data

General information		Power (Rated) (Nom)	
Base	G13 [Medium Bi-Pin Fluorescent]		14 W
EU RoHS compliant	Yes	Lamp Current (Max)	260 mA
Nominal Lifetime (Nom)	70000 h	Lamp Current (Min)	100 mA
Switching Cycle	50000	Wattage Equivalent	32 W
Tier	CorePro	Starting Time (Nom)	0.5 s
Light technical		Warm Up Time to 60% Light (Nom)	0.5 s
Color Code	835 [CCT of 3500K]	UL Type	Type A - works on ballast
Beam Angle (Nom)	240 °	Power Factor (Nom)	0.9
Initial lumen (Nom)	2000 lm	Voltage (Nom)	120-277, 347 V
Color Designation	White (WH)	Temperature	
Correlated Color Temperature (Nom)	3500 K	T-Ambient (Max)	113 °F
Luminous Efficacy (rated) (Nom)	142.86 lm/W	T-Ambient (Min)	-4 °F
Color Consistency	<6	T-Storage (Range)	-40 °C to 65 °C
Color Rendering Index (Nom)	82	T-Storage (Max)	149 °F
LLMF At End Of Nominal Lifetime (Nom)	70 %	T-Storage (Min)	-40 °F
Operating and electrical		T-Case Maximum (Nom)	122 °F
Input Frequency	25000-105000 Hz		

T8

Controls and dimming

Dimmable	Yes
----------	-----

Mechanical and housing

Bulb Finish	Frosted
Bulb Material	Glass
Product Length	47-1/4 in
Bulb Shape	Tube, double-ended

Approval and application

Energy Saving Product	Yes
Approval Marks	UL certificate RoHS compliance DLC compliance
Energy Consumption kWh/1000 h	- kWh
Energy Certifications	DLC Standard

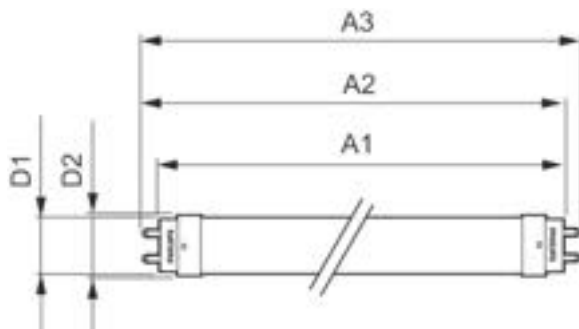
Application conditions

Ambient temperature range	-20 °C to 45 °C
---------------------------	-----------------

Product data

Order product name	14T8/COR/48-835/IF20/G/DIM 10/1
EAN/UPC - Product	046677452759
Order code	470104
Numerator - Quantity Per Pack	1
Numerator - Packs per outer box	10
Material Nr. (12NC)	929001343134
Net Weight (Piece)	0.474 lb
Model Number	9290013431A

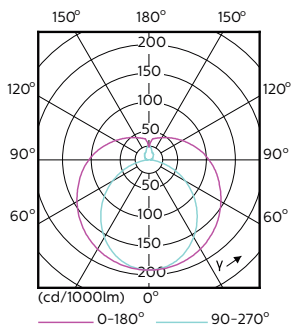
Dimensional drawing



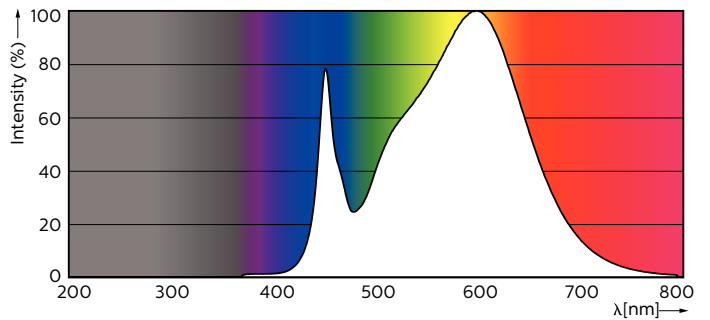
14T8/COR/48-835/IF20/G/DIM 10/1

Product	D1	D2	A1	A2	A3
14T8/COR/48-835/IF20/G/DIM 10/1	1-1/16 in	1-1/8 in	47-3/16 in	47-1/2 in	47-3/4 in

Photometric data

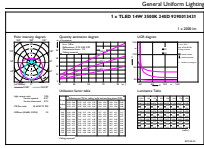


LEDtube 1200mm 17W G13 2100lm



LEDtube PRO 1200mm 14W G13 835 2000lm

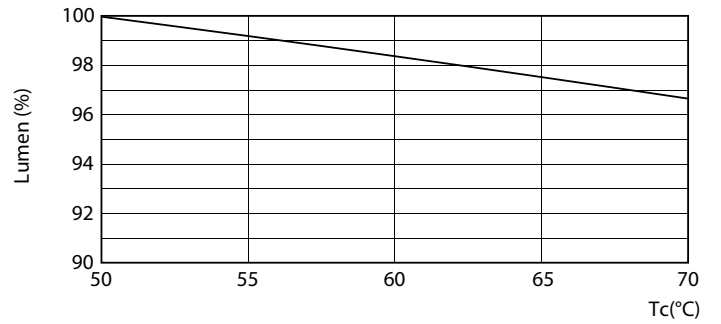
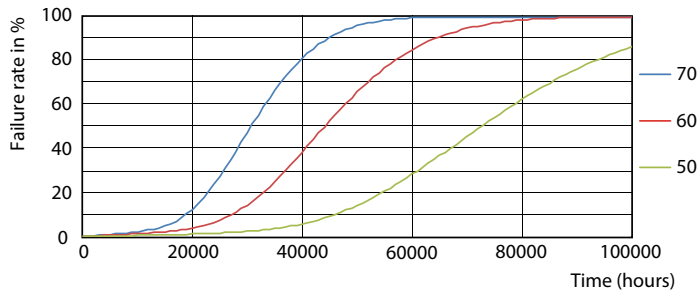
Photometric data



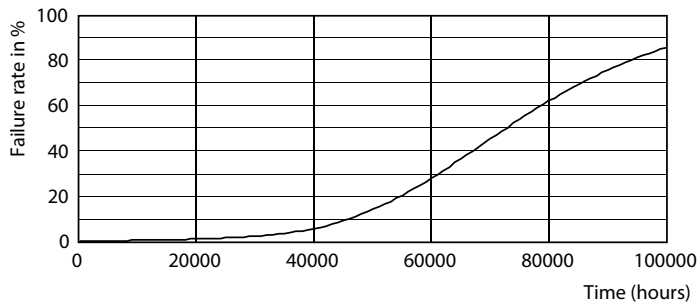
General Information 4.1 Photo Lighting 8.1 Page 17

LEDtube PRO 1200mm 14W G13 835 2000lm

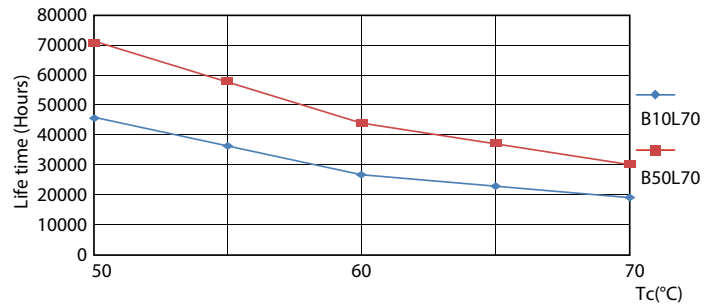
Lifetime



LEDtube 70K 5070 FailureRate-LED



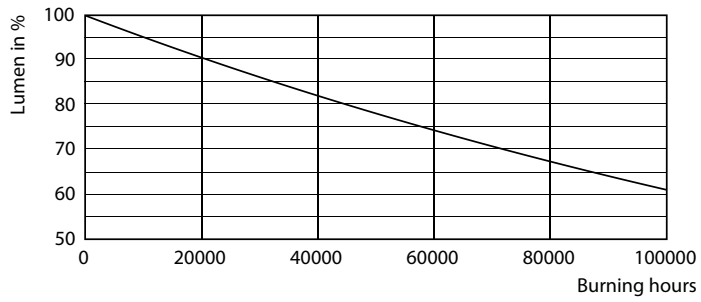
12W G13



Life Expectancy Diagram

LEDtube 70K 5070 LifetimeVsTc-LED

Lifetime



Lumen Maintenance Diagram

