



# T8

## 14T8/COR/48-830/IF20/G/DIM 10/1

Our TLEDs are available in InstantFit (Type A / Type C) or MainsFit (Ballast bypass / Type B) versions. The InstantFit lamps work on a broad variety of ballasts and LED drivers. Only InstantFit has over 15,000 lamp & ballast combinations delivering even light output, energy savings and a long lifetime. Our MainsFit products feature a double-ended design, simplifying installation while a proprietary safety circuit minimizes a shock risk. Lamp sizes range from 2-foot to 8-foot and U-bend with a variety of lumen outputs.

### Product data

General information	
Base	G13 [ Medium Bi-Pin Fluorescent]
EU RoHS compliant	Yes
Nominal Lifetime (Nom)	70000 h
Switching Cycle	50000
Tier	CorePro
Light technical	
Color Code	830 [ CCT of 3000K]
Beam Angle (Nom)	240 °
Initial lumen (Nom)	2000 lm
Color Designation	White (WH)
Correlated Color Temperature (Nom)	3000 K
Luminous Efficacy (rated) (Nom)	142.86 lm/W
Color Consistency	<6
Color Rendering Index (Nom)	82
LLMF At End Of Nominal Lifetime (Nom)	70 %
Operating and electrical	
Input Frequency	25000-105000 Hz

Power (Rated) (Nom)	14 W
Lamp Current (Max)	260 mA
Lamp Current (Min)	100 mA
Wattage Equivalent	32 W
Starting Time (Nom)	0.5 s
Warm Up Time to 60% Light (Nom)	0.5 s
UL Type	Type A - works on ballast
Power Factor (Nom)	0.9
Voltage (Nom)	120-277, 347 V
Temperature	
T-Ambient (Max)	113 °F
T-Ambient (Min)	-4 °F
T-Storage (Range)	-40 °C to 65 °C
T-Storage (Max)	149 °F
T-Storage (Min)	-40 °F
T-Case Maximum (Nom)	122 °F

# T8

## Controls and dimming

Dimmable	Yes
----------	-----

## Mechanical and housing

Bulb Finish	Frosted
Bulb Material	Glass
Product Length	47-1/4 in
Bulb Shape	Tube, double-ended

## Approval and application

Energy Saving Product	Yes
Approval Marks	UL certificate RoHS compliance DLC compliance
Energy Consumption kWh/1000 h	- kWh
Energy Certifications	DLC Standard

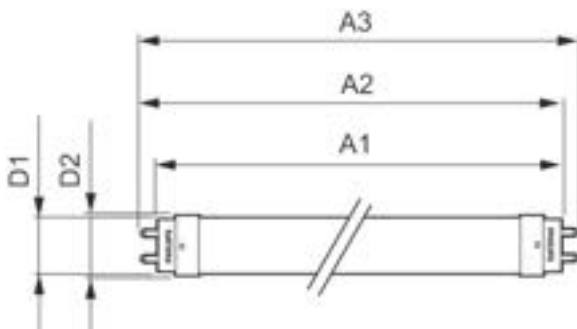
## Application conditions

Ambient temperature range	-20 °C to 45 °C
---------------------------	-----------------

## Product data

Order product name	14T8/COR/48-830/IF20/G/DIM 10/1
EAN/UPC - Product	046677452407
Order code	470096
Numerator - Quantity Per Pack	1
Numerator - Packs per outer box	10
Material Nr. (12NC)	929001343034
Net Weight (Piece)	0.474 lb
Model Number	9290013430A

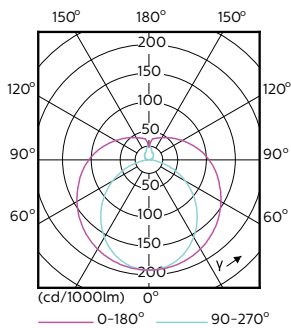
## Dimensional drawing



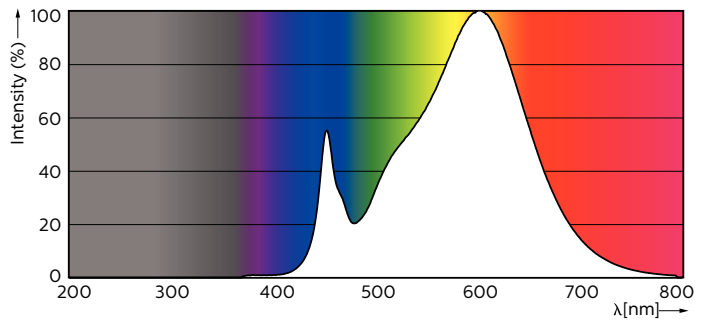
14T8/COR/48-830/IF20/G/DIM 10/1

Product	D1	D2	A1	A2	A3
14T8/COR/48-830/IF20/G/DIM 10/1	1-1/16 in	1-1/8 in	47-3/16 in	47-1/2 in	47-3/4 in

## Photometric data

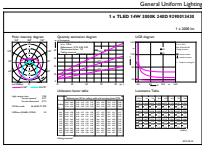


LEDtube 1200mm 17W G13 2100lm



LEDtube PRO 1200mm 14W G13 830 2000lm

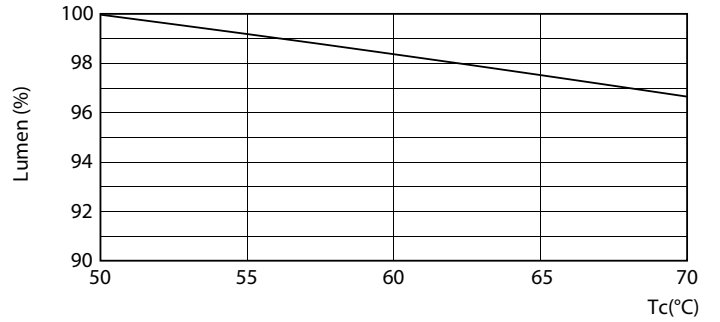
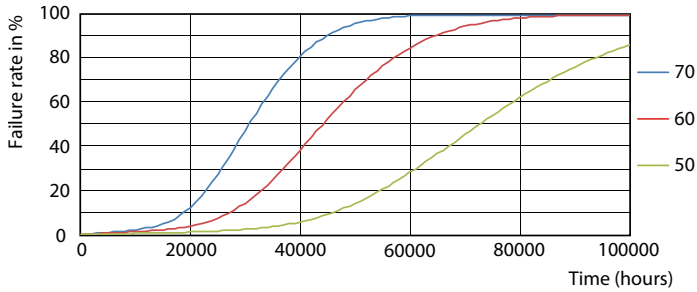
Photometric data



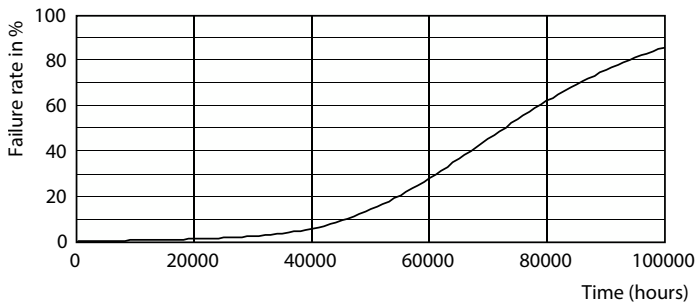
General Parameters 4.1 Photo Lighting 8.1 Page 17

LEDtube PRO 1200mm 14W G13 830 2000lm

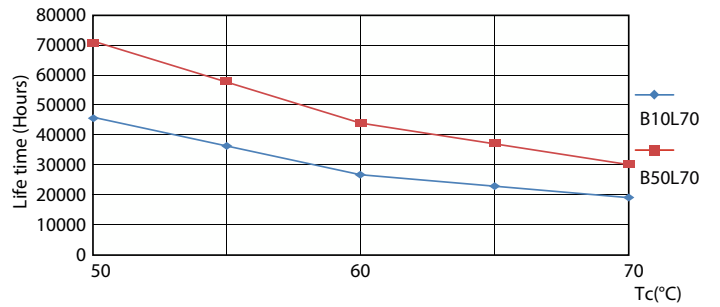
Lifetime



LEDtube 70K 5070 FailureRate-LED



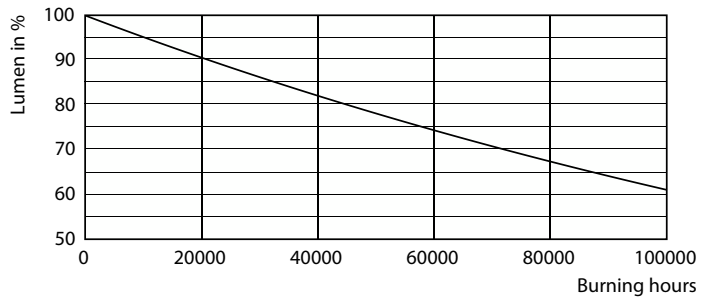
12W G13



Life Expectancy Diagram

LEDtube 70K 5070 LifetimeVsTc-LED

**Lifetime**



**Lumen Maintenance Diagram**

