



T8

15.5T8/MAS/48-835/IF24/P/DIM 25/1

Our TLEDs are available in InstantFit (Type A / Type C) or MainsFit (Ballast bypass / Type B) versions. The InstantFit lamps work on a broad variety of ballasts and LED drivers. Only InstantFit has over 15,000 lamp & ballast combinations delivering even light output, energy savings and a long lifetime. Our MainsFit products feature a double-ended design, simplifying installation while a proprietary safety circuit minimizes a shock risk. Lamp sizes range from 2-foot to 8-foot and U-bend with a variety of lumen outputs.

Product data

General information	
Base	G13 [Medium Bi-Pin Fluorescent]
EU RoHS compliant	Yes
Nominal Lifetime (Nom)	70000 h
Switching Cycle	50000
Technical Type	LEDTECH-LOV
Tier	MasterClass
Light technical	
Color Code	835 [CCT of 3500K]
Beam Angle (Nom)	180 °
Initial lumen (Nom)	2400 lm
Color Designation	White (WH)
Correlated Color Temperature (Nom)	3500 K
Luminous Efficacy (rated) (Nom)	154 lm/W
Color Consistency	<6
Color Rendering Index (Nom)	80
LLMF At End Of Nominal Lifetime (Nom)	70 %

Operating and electrical	
Input Frequency	20K to 120K Hz
Power (Rated) (Nom)	15.5 W
Lamp Current (Max)	320 mA
Lamp Current (Min)	60 mA
Wattage Equivalent	32 W
Starting Time (Nom)	0.5 s
Warm Up Time to 60% Light (Nom)	0.5 s
UL Type	TLED_Type A; UL listed HF
Power Factor (Nom)	0.9
Voltage (Nom)	120-277,347 V
Temperature	
T-Ambient (Max)	131 °F
T-Ambient (Min)	-4 °F
T-Storage (Range)	-40 °C to 65 °C
T-Storage (Max)	149 °F
T-Storage (Min)	-40 °F
T-Case Maximum (Nom)	104 °F

T8

Controls and dimming

Dimmable	Only with specific dimmers
----------	----------------------------

Mechanical and housing

Bulb Finish	Frosted
Bulb Material	Plastic
Product Length	47-1/4 in
Bulb Shape	Tube, double-ended

Approval and application

Energy Saving Product	Yes
Approbation Marks	RoHS compliance UL certificate DLC compliance
Energy Consumption kWh/1000 h	- kWh

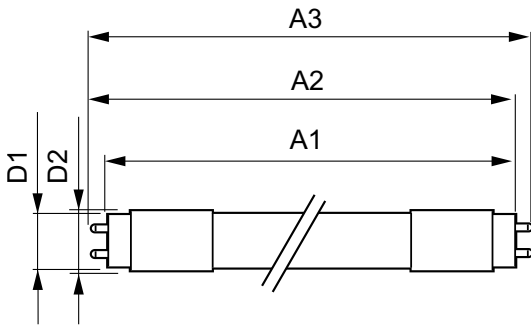
Application conditions

Ambient temperature range	-20 °C to 55 °C
---------------------------	-----------------

Product data

Order product name	15.5T8/MAS/48-835/IF24/P/DIM 25/1
EAN/UPC - Product	046677545185
Order code	533372
Numerator - Quantity Per Pack	1
Numerator - Packs per outer box	25
Material Nr. (12NC)	929002016304
Net Weight (Piece)	0.364 lb
Model Number	9290020163

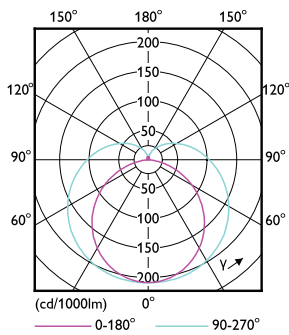
Dimensional drawing



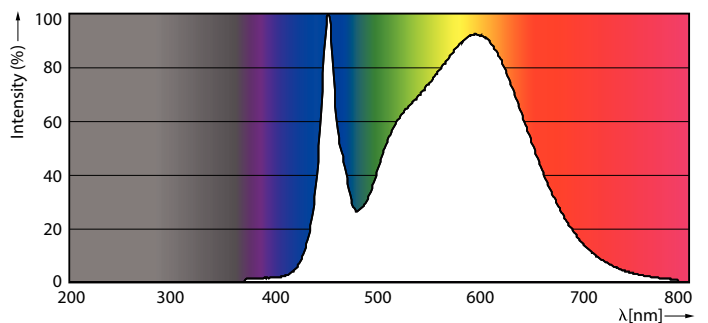
15.5T8/MAS/48-835/IF24/P/DIM 25/1

Product	D1	D2	A1	A2	A3
15.5T8/MAS/48-835/IF24/P/DIM 25/1	1-1/16 in	1-1/8 in	47-3/16 in	47-1/2 in	47-3/4 in

Photometric data

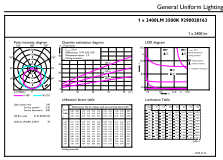


LEDtube 15,5W G13 T8



LEDtube 15,5W G13 T8 835

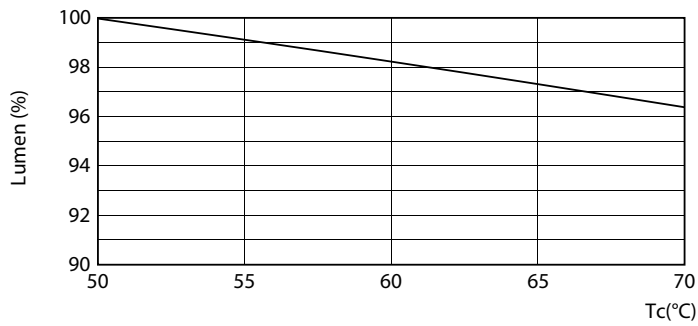
Photometric data



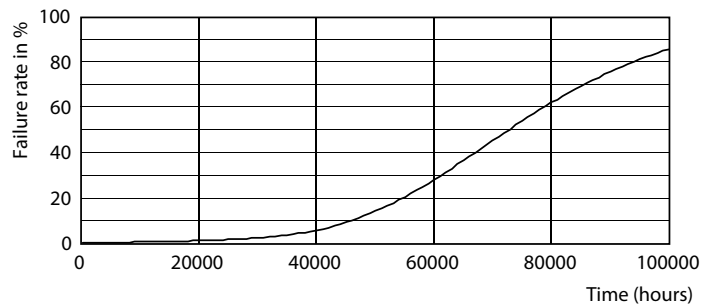
© 2023 Philips Lighting B.V. Page 10

LEDtube 15,5W G13 T8 835

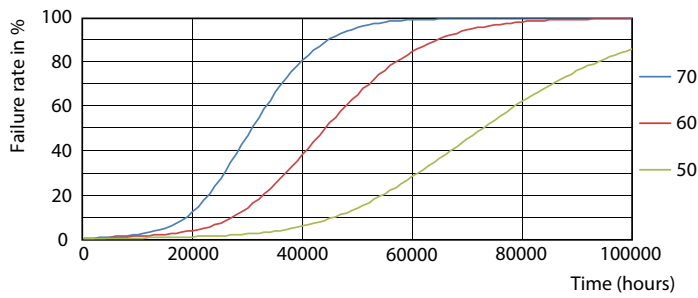
Lifetime



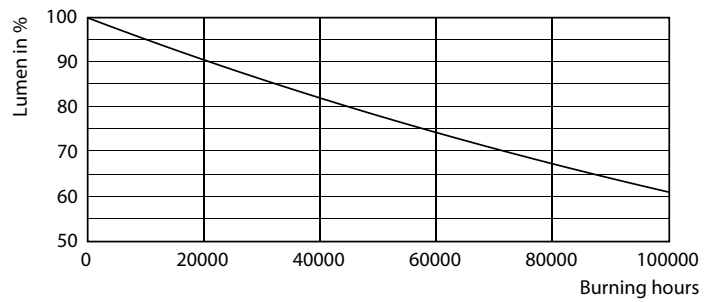
LEDtube 15,5W G13 T8 LumenVsTc



LEDtube 15,5W G13 T8



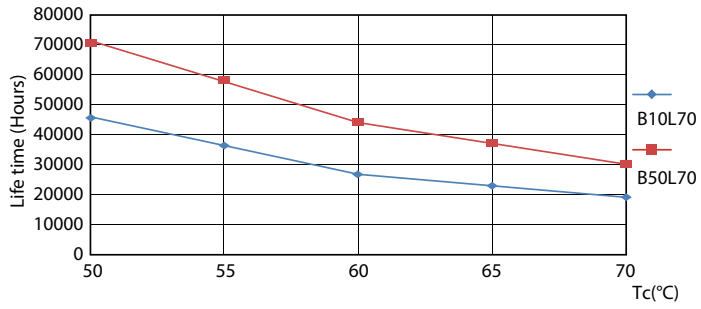
LEDtube 15,5W G13 T8 FailureRate



LEDtube 15,5W G13 T8

T8

Lifetime



LEDtube 15,5W G13 T8 LifetimeVsTc

