

T8

30T8/COR/96-840/IF42/G/FA8 10/1

Our TLEDs are available in InstantFit (Type A / Type C) or MainsFit (Ballast bypass / Type B) versions. The InstantFit lamps work on a broad variety of ballasts and LED drivers. Only InstantFit has over 15,000 lamp & ballast combinations delivering even light output, energy savings and a long lifetime. Our MainsFit products feature a double-ended design, simplifying installation while a proprietary safety circuit minimizes a shock risk. Lamp sizes range from 2-foot to 8-foot and U-bend with a variety of lumen outputs.

Product data

General information			
Cap-Base	FA8 [FA8]	Power (Nom)	30 W
EU RoHS compliant	Yes	Lamp Current (Max)	350 mA
Nominal Lifetime (Nom)	50000 h	Lamp Current (Min)	100 mA
Switching Cycle	50000	Wattage Equivalent	60 W
Tier	CorePro	Starting Time (Nom)	0.5 s
		Warm Up Time to 60% Light (Nom)	0.5 s
Light technical		UL Type	Type A - works on ballast
Color Code	840 [CCT of 4000K]	Power Factor (Nom)	0.9
Beam Angle (Nom)	240 °	Voltage (Nom)	200-500 V
Luminous Flux (Nom)	4200 lm	Temperature	
Color Designation	Cool White (CW)	T-Ambient (Max)	45 °C
Correlated Color Temperature (Nom)	4000 K	T-Ambient (Min)	-20 °C
Luminous Efficacy (rated) (Nom)	140.00 lm/W	T-Storage (Range)	-40 °C to 65 °C
Color Consistency	ANSI	T-Storage (Max)	65 °C
Color Rendering Index (Nom)	80	T-Storage (Min)	-40 °C
LLMF At End Of Nominal Lifetime (Nom)	70 %	T-Case Maximum (Nom)	45 °C
Operating and electrical			
Input Frequency	35000-150000 Hz		

T8

Controls and dimming

Dimmable	No
----------	----

Mechanical and housing

Bulb Finish	Frosted
Bulb Material	Glass
Product Length	2400 mm
Bulb Shape	Tube, double-ended

Approval and application

Energy Saving Product	Yes
Approval Marks	UL certificate RoHS compliance
Energy Consumption kWh/1000 h	- kWh
Energy Certifications	DLC Standard

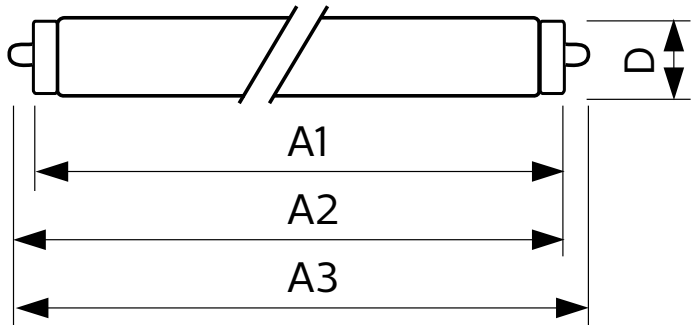
Application conditions

Ambient temperature range	-20 °C to 45 °C
---------------------------	-----------------

Product data

Order product name	30T8/COR/96-840/IF42/G/FA8 10/1
EAN/UPC - Product	046677533021
Order code	929001897304
Numerator - Quantity Per Pack	1
Numerator - Packs per outer box	10
Material Nr. (12NC)	929001897304
Net Weight (Piece)	0.540 kg

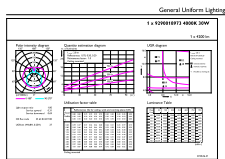
Dimensional drawing



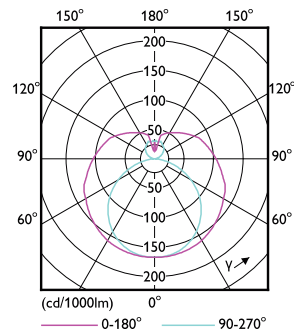
30T8/COR/96-840/IF42/G/FA8 10/1

Product	D1	D2	A1	A2	A3
30T8/COR/96-840/ IF42/G/FA8 10/1	25.5 mm	28 mm	2366.9 mm	2375.8 mm	2384.7 mm

Photometric data

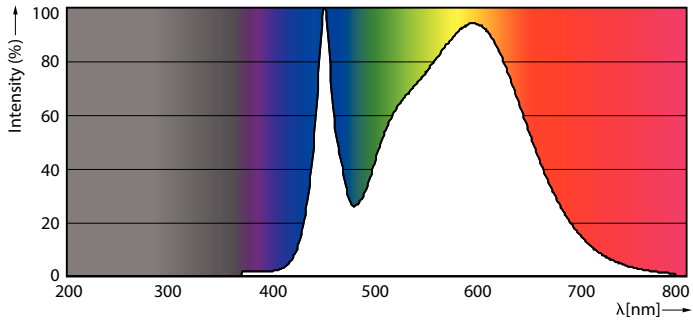


30W FA8 840 4000K



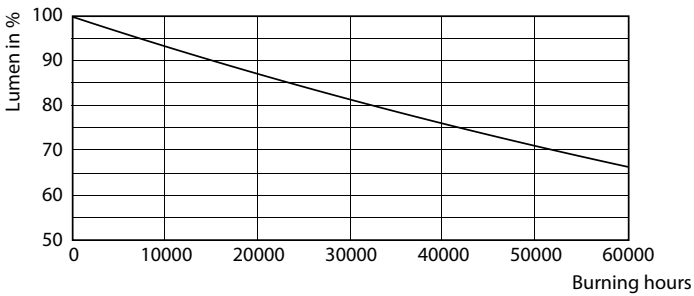
30W FA8 830 3000K

Photometric data

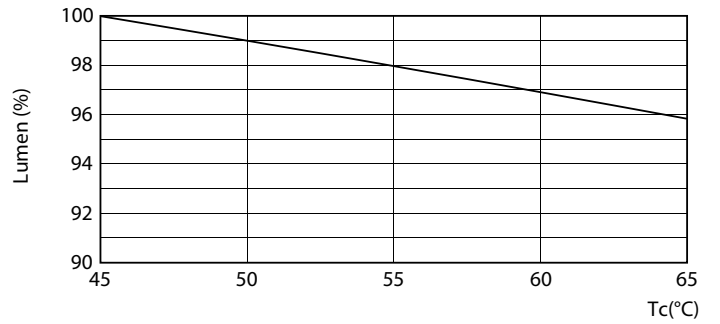


30W FA8

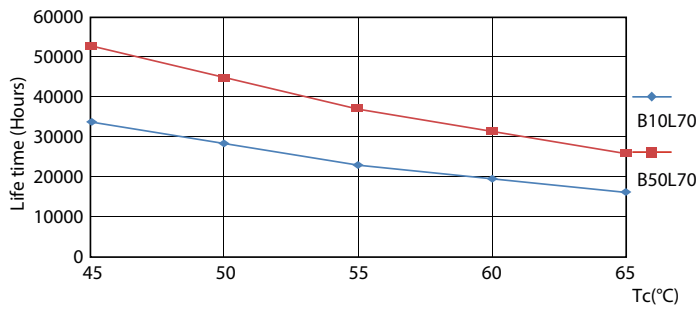
Lifetime



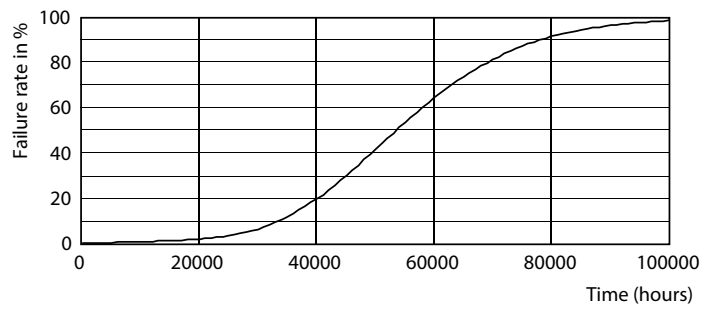
30W FA8



30W FA8



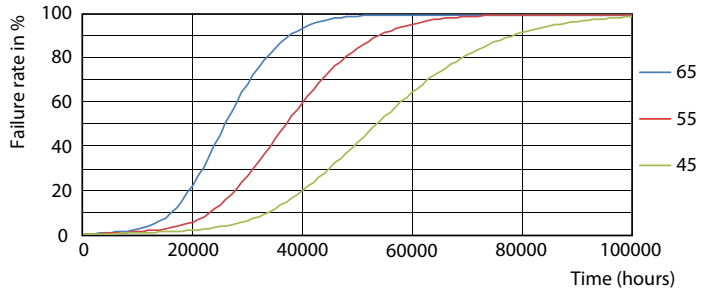
30W FA8



30W FA8

T8

Lifetime



30W FA8

