



T8

7T8/MAS/24-850/IF11/P/DIM 10/1

Our TLEDs are available in InstantFit (Type A / Type C) or MainsFit (Ballast bypass / Type B) versions. The InstantFit lamps work on a broad variety of ballasts and LED drivers. Only InstantFit has over 15,000 lamp & ballast combinations delivering even light output, energy savings and a long lifetime. Our MainsFit products feature a double-ended design, simplifying installation while a proprietary safety circuit minimizes a shock risk. Lamp sizes range from 2-foot to 8-foot and U-bend with a variety of lumen outputs.

Product data

General information	
Cap-Base	G13 [Medium Bi-Pin Fluorescent]
EU RoHS compliant	Yes
Nominal Lifetime (Nom)	70000 h
Switching Cycle	50000
Technical Type	LEDTECH-LOV
Tier	MasterClass
Light technical	
Color Code	850 [CCT of 5000K]
Beam Angle (Nom)	180 °
Luminous Flux (Nom)	1200 lm
Color Designation	Daylight
Correlated Color Temperature (Nom)	5000 K
Luminous Efficacy (rated) (Nom)	171 lm/W
Color Consistency	<5
Color Rendering Index (Nom)	80
LLMF At End Of Nominal Lifetime (Nom)	70 %

Operating and electrical	
Input Frequency	20K to 120K Hz
Power (Nom)	7 W
Lamp Current (Max)	240 mA
Lamp Current (Min)	50 mA
Wattage Equivalent	17 W
Starting Time (Nom)	0.5 s
Warm Up Time to 60% Light (Nom)	0.5 s
UL Type	TLED_Type A; UL listed HF
Power Factor (Nom)	0.9
Voltage (Nom)	120-277,347 V
Temperature	
T-Ambient (Max)	45 °C
T-Ambient (Min)	-20 °C
T-Storage (Range)	-40 °C to 65 °C
T-Storage (Max)	65 °C
T-Storage (Min)	-40 °C
T-Case Maximum (Nom)	40 °C

T8

Controls and dimming

Dimmable	Only with specific dimmers
----------	----------------------------

Mechanical and housing

Bulb Finish	Frosted
Bulb Material	Plastic
Product Length	600 mm
Bulb Shape	Tube, double-ended

Approval and application

Energy Saving Product	Yes
Approval Marks	RoHS compliance UL certificate DLC compliance
Energy Consumption kWh/1000 h	- kWh
Energy Certifications	DLC Standard

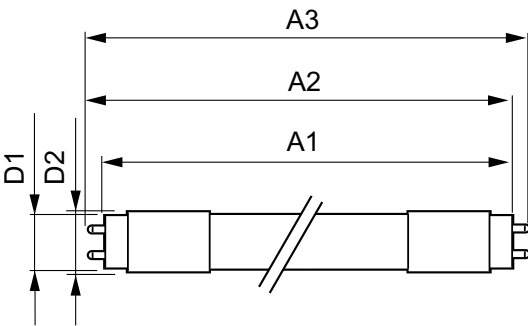
Application conditions

Ambient temperature range	-20 °C to 45 °C
---------------------------	-----------------

Product data

Order product name	7T8/MAS/24-850/IF11/P/DIM 10/1
EAN/UPC - Product	046677541842
Order code	929001987204
Numerator - Quantity Per Pack	1
Numerator - Packs per outer box	10
Material Nr. (12NC)	929001987204
Net Weight (Piece)	0.090 kg

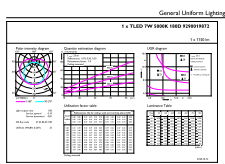
Dimensional drawing



7T8/MAS/24-850/IF11/P/DIM 10/1

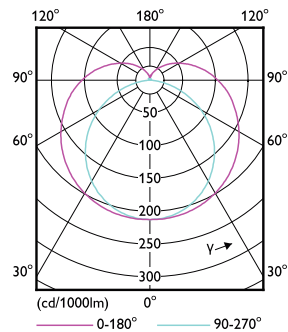
Product	D1	D2	A1	A2	A3
7T8/MAS/24-850/ IF11/P/DIM 10/1	25.7 mm	26.3 mm	588.6 mm	595.7 mm	602.8 mm

Photometric data



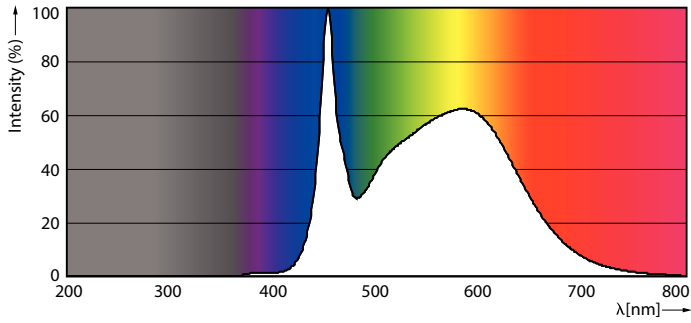
Technical Parameters 04 Page Lighting 01 Page 11

G13 5000K 1150lm



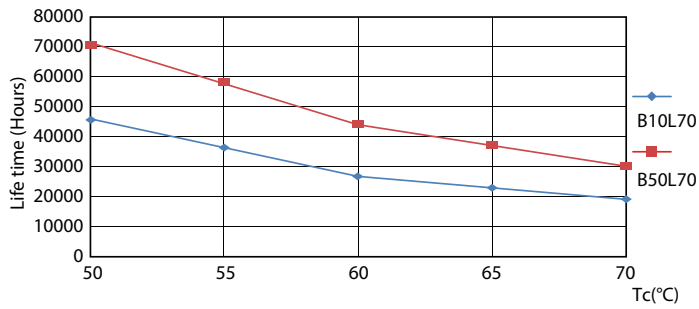
G13 4000K

Photometric data

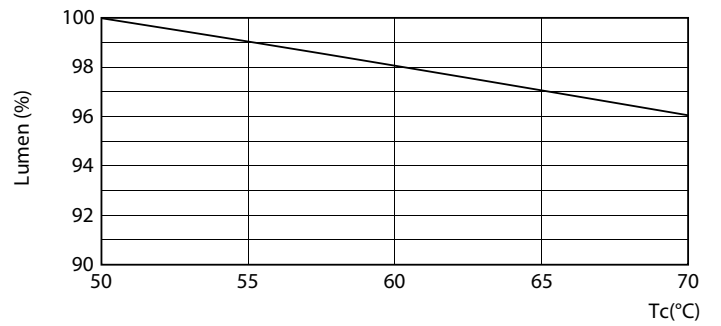


G13 5000K 1150lm

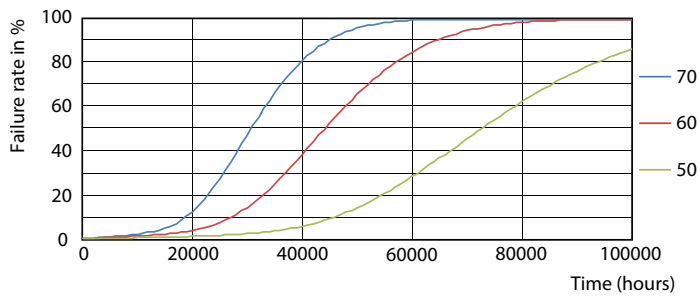
Lifetime



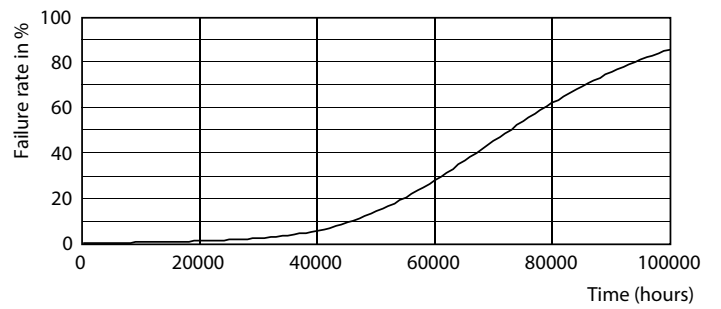
G13 4000K



G13 4000K

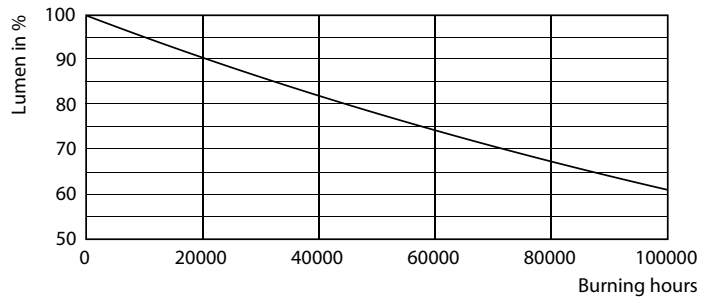


G13 4000K



G13 4000K

Lifetime



G13 4000K

