



T8

7T8/MAS/24-835/IF10/P/DIM 10/1

Our TLEDs are available in InstantFit (Type A / Type C) or MainsFit (Ballast bypass / Type B) versions. The InstantFit lamps work on a broad variety of ballasts and LED drivers. Only InstantFit has over 15,000 lamp & ballast combinations delivering even light output, energy savings and a long lifetime. Our MainsFit products feature a double-ended design, simplifying installation while a proprietary safety circuit minimizes a shock risk. Lamp sizes range from 2-foot to 8-foot and U-bend with a variety of lumen outputs.

Product data

General information	
Cap-Base	G13 [Medium Bi-Pin Fluorescent]
EU RoHS compliant	Yes
Nominal Lifetime (Nom)	70000 h
Switching Cycle	50000
Technical Type	LEDTECH-LOV
Tier	MasterClass

Light technical	
Color Code	835 [CCT of 3500K]
Beam Angle (Nom)	180 °
Luminous Flux (Nom)	1150 lm
Color Designation	White (WH)
Correlated Color Temperature (Nom)	3500 K
Luminous Efficacy (rated) (Nom)	164 lm/W
Color Consistency	<6
Color Rendering Index (Nom)	80
LLMF At End Of Nominal Lifetime (Nom)	70 %

Operating and electrical	
Input Frequency	20K to 120K Hz
Power (Nom)	7 W
Lamp Current (Max)	240 mA
Lamp Current (Min)	50 mA
Wattage Equivalent	17 W
Starting Time (Nom)	0.5 s
Warm Up Time to 60% Light (Nom)	0.5 s
UL Type	TLED_Type A; UL listed HF
Power Factor (Nom)	0.9
Voltage (Nom)	120-277,347 V

Temperature	
T-Ambient (Max)	45 °C
T-Ambient (Min)	-20 °C
T-Storage (Range)	-40 °C to 65 °C
T-Storage (Max)	65 °C
T-Storage (Min)	-40 °C
T-Case Maximum (Nom)	40 °C

T8

Controls and dimming

Dimmable	Only with specific dimmers
----------	----------------------------

Mechanical and housing

Bulb Finish	Frosted
Bulb Material	Plastic
Product Length	600 mm
Bulb Shape	Tube, double-ended

Approval and application

Energy Saving Product	Yes
Approval Marks	RoHS compliance UL certificate DLC compliance
Energy Consumption kWh/1000 h	- kWh
Energy Certifications	DLC Standard

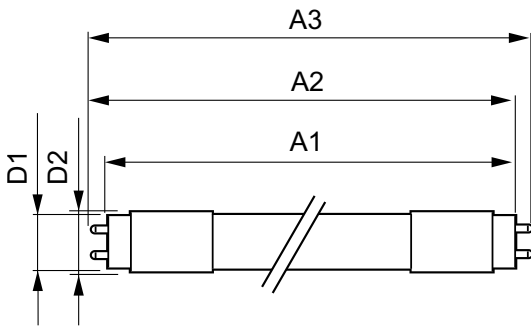
Application conditions

Ambient temperature range	-20 °C to 45 °C
---------------------------	-----------------

Product data

Order product name	7T8/MAS/24-835/IF10/P/DIM 10/1
EAN/UPC - Product	046677541828
Order code	929001987004
Numerator - Quantity Per Pack	1
Numerator - Packs per outer box	10
Material Nr. (12NC)	929001987004
Net Weight (Piece)	0.090 kg

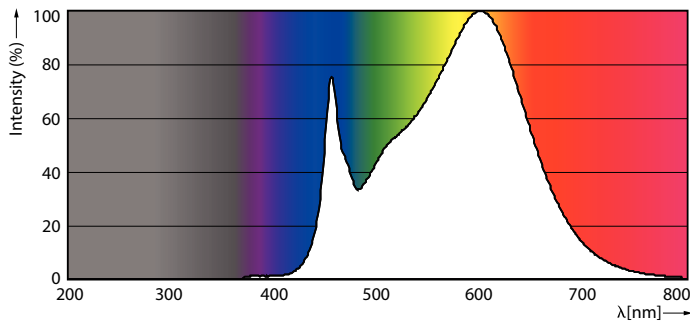
Dimensional drawing



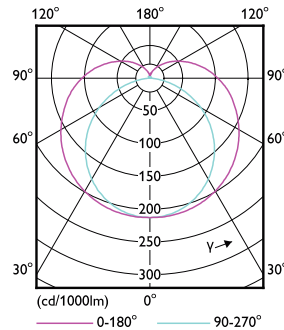
7T8/MAS/24-835/IF10/P/DIM 10/1

Product	D1	D2	A1	A2	A3
7T8/MAS/24-835/IF10/P/DIM 10/1	25.7 mm	26.3 mm	588.6 mm	595.7 mm	602.8 mm

Photometric data

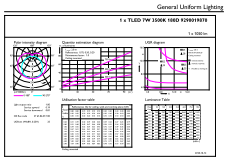


G13 3500K 1100lm



G13 4000K

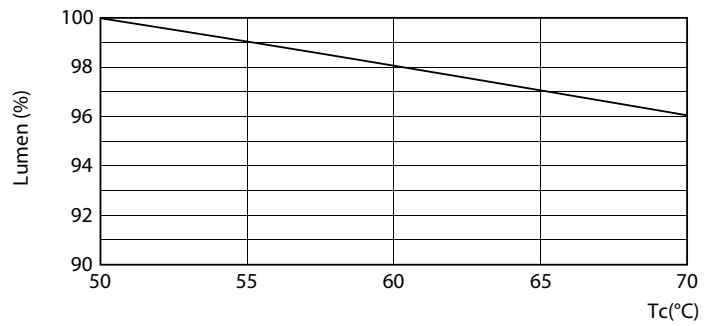
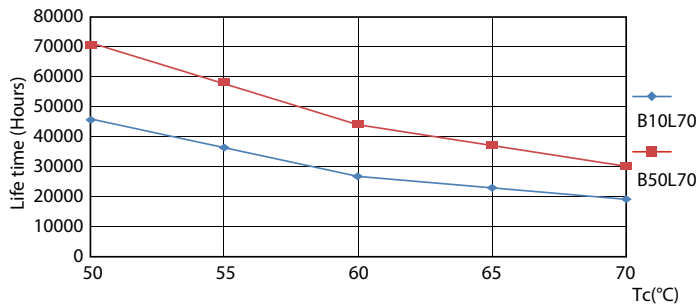
Photometric data



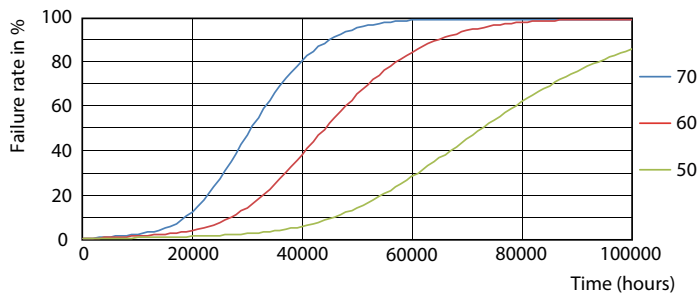
© Philips Lighting B.V. Page 10

G13 3500K 1100lm

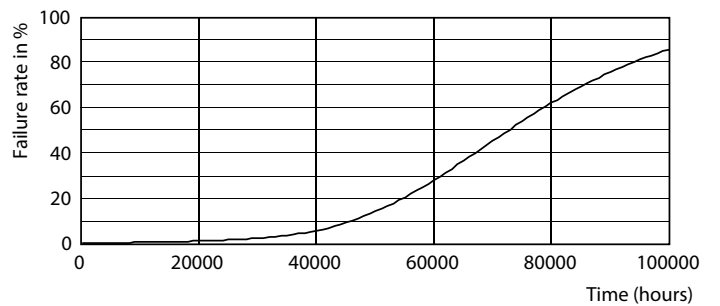
Lifetime



G13 4000K



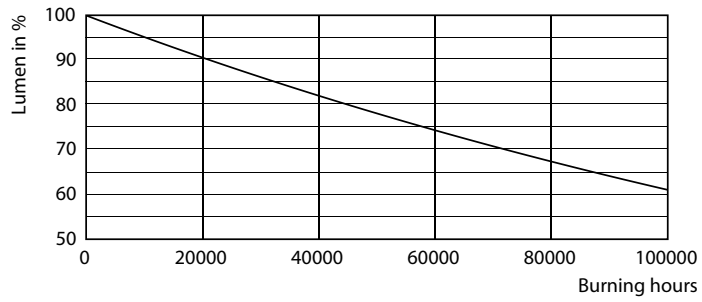
G13 4000K



G13 4000K

G13 4000K

Lifetime



G13 4000K

