



T8

13T8-6U/MAS/24-830/IF20/P/DIM 10/1

Our TLEDs are available in InstantFit (Type A / Type C) or MainsFit (Ballast bypass / Type B) versions. The InstantFit lamps work on a broad variety of ballasts and LED drivers. Only InstantFit has over 15,000 lamp & ballast combinations delivering even light output, energy savings and a long lifetime. Our MainsFit products feature a double-ended design, simplifying installation while a proprietary safety circuit minimizes a shock risk. Lamp sizes range from 2-foot to 8-foot and U-bend with a variety of lumen outputs.

Product data

General information	
Cap-Base	G13 [Medium Bi-Pin Fluorescent]
EU RoHS compliant	Yes
Nominal Lifetime (Nom)	70000 h
Switching Cycle	50000
Tier	MasterClass
Light technical	
Color Code	830 [CCT of 3000K]
Beam Angle (Nom)	180 °
Luminous Flux (Nom)	2000 lm
Color Designation	White (WH)
Correlated Color Temperature (Nom)	3000 K
Luminous Efficacy (rated) (Nom)	153.00 lm/W
Color Consistency	<6
Color Rendering Index (Nom)	80
LLMF At End Of Nominal Lifetime (Nom)	70 %
Operating and electrical	
Input Frequency	20K to 120K Hz

Power (Nom)	13 W
Wattage Equivalent	32 W
Starting Time (Nom)	0.5 s
Warm Up Time to 60% Light (Nom)	0.5 s
UL Type	Type A - works on ballast
Power Factor (Nom)	0.9
Voltage (Nom)	120-277, 347 V
Temperature	
T-Ambient (Max)	45 °C
T-Ambient (Min)	-20 °C
T-Storage (Range)	-40 °C to 65 °C
T-Storage (Max)	65 °C
T-Storage (Min)	-40 °C
T-Case Maximum (Nom)	50 °C
Controls and dimming	
Dimmable	Yes

T8

Mechanical and housing

Bulb Finish	Frosted
Bulb Material	Plastic
Product Length	600 mm
Bulb Shape	Tube, double-ended

Approval and application

Energy Saving Product	Yes
Approval Marks	RoHS compliance UL certificate DLC compliance
Energy Consumption kWh/1000 h	- kWh
Energy Certifications	DLC Standard

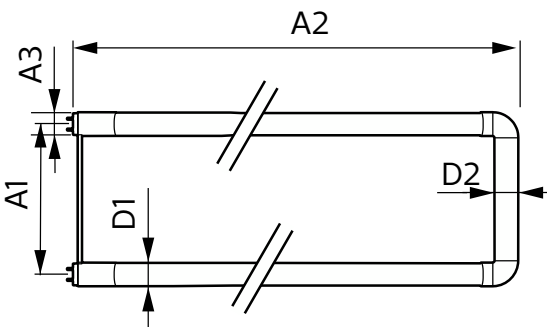
Application conditions

Ambient temperature range	-20 °C to 45 °C
---------------------------	-----------------

Product data

Order product name	13T8-6U/MAS/24-830/IF20/P/DIM 10/1
EAN/UPC - Product	046677541859
Order code	929001987404
Numerator - Quantity Per Pack	1
Numerator - Packs per outer box	10
Material Nr. (12NC)	929001987404
Net Weight (Piece)	0.270 kg

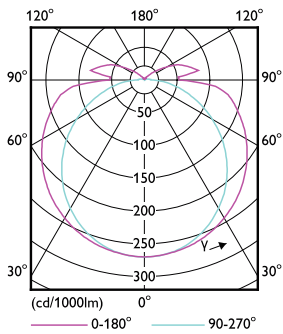
Dimensional drawing



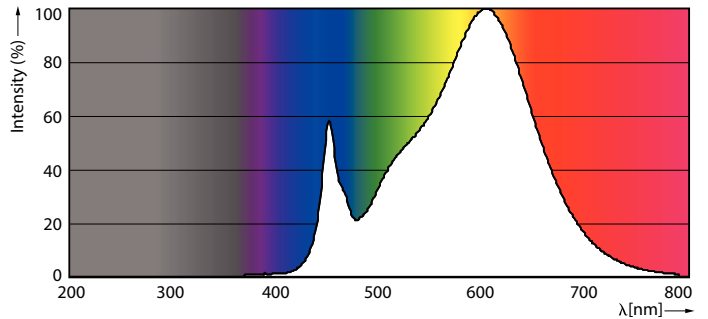
13T8-6U/MAS/24-830/IF20/P/DIM 10/1

Product	D1	D2	A1	A2	A3
13T8-6U/MAS/24-830/IF20/P/DIM 10/1	25.7 mm	28 mm	152 mm	570 mm	27.8 mm

Photometric data

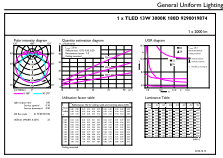


G13 3000K 2000lm



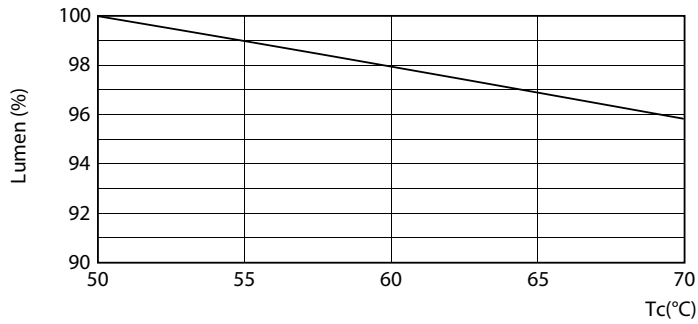
G13 3000K 2000lm

Photometric data

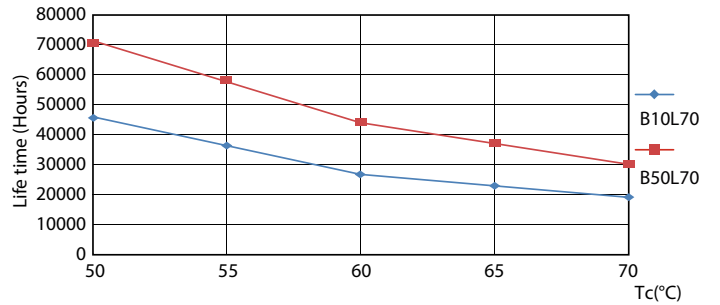


G13 3000K 2000lm

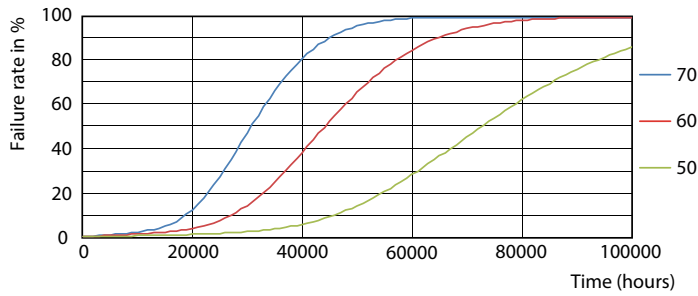
Lifetime



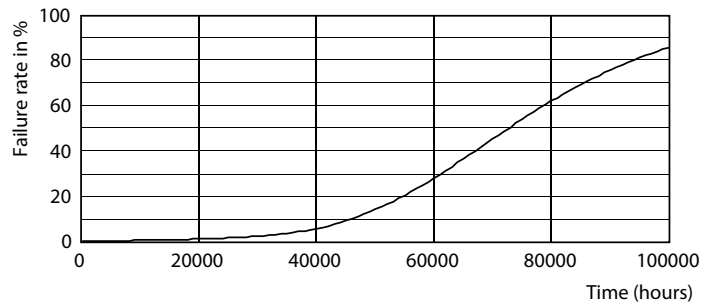
G13 3000K 2000lm



G13 4000K

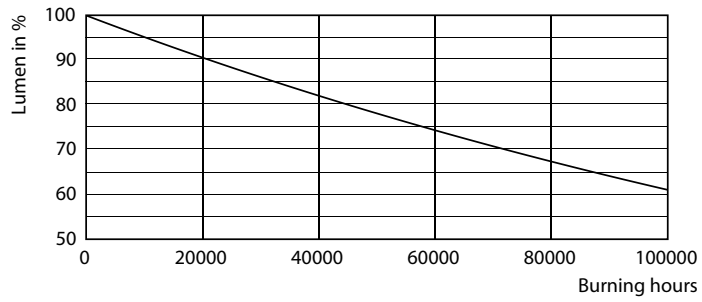


G13 4000K



G13 4000K

Lifetime



G13 4000K

