



T8

13T8-6U/MAS/24-835/IF20/P/DIM 10/1

Our TLEDs are available in InstantFit (Type A / Type C) or MainsFit (Ballast bypass / Type B) versions. The InstantFit lamps work on a broad variety of ballasts and LED drivers. Only InstantFit has over 15,000 lamp & ballast combinations delivering even light output, energy savings and a long lifetime. Our MainsFit products feature a double-ended design, simplifying installation while a proprietary safety circuit minimizes a shock risk. Lamp sizes range from 2-foot to 8-foot and U-bend with a variety of lumen outputs.

Product data

General information		Power (Nom)	
Cap-Base	G13 [Medium Bi-Pin Fluorescent]		13 W
EU RoHS compliant	Yes	Wattage Equivalent	32 W
Nominal Lifetime (Nom)	70000 h	Starting Time (Nom)	0.5 s
Switching Cycle	50000	Warm Up Time to 60% Light (Nom)	0.5 s
Tier	MasterClass	UL Type	Type A - works on ballast
		Power Factor (Nom)	0.9
		Voltage (Nom)	120-277, 347 V
Light technical		Temperature	
Color Code	835 [CCT of 3500K]	T-Ambient (Max)	45 °C
Beam Angle (Nom)	180 °	T-Ambient (Min)	-20 °C
Luminous Flux (Nom)	2000 lm	T-Storage (Range)	-40 °C to 65 °C
Color Designation	White (WH)	T-Storage (Max)	65 °C
Correlated Color Temperature (Nom)	3500 K	T-Storage (Min)	-40 °C
Luminous Efficacy (rated) (Nom)	153.00 lm/W	T-Case Maximum (Nom)	50 °C
Color Consistency	<6		
Color Rendering Index (Nom)	80	Controls and dimming	
LLMF At End Of Nominal Lifetime (Nom)	70 %	Dimmable	Yes
Operating and electrical			
Input Frequency	20K to 120K Hz		

T8

Mechanical and housing

Bulb Finish	Frosted
Bulb Material	Plastic
Product Length	600 mm
Bulb Shape	Tube, double-ended

Approval and application

Energy Saving Product	Yes
Approval Marks	RoHS compliance UL certificate DLC compliance
Energy Consumption kWh/1000 h	- kWh
Energy Certifications	DLC Standard

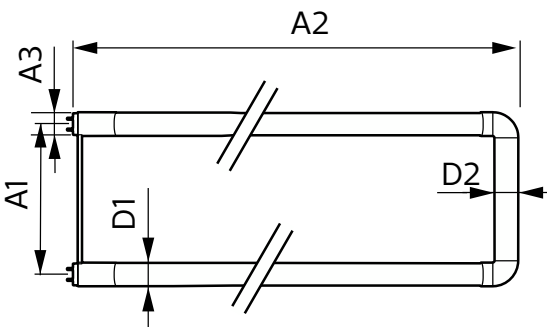
Application conditions

Ambient temperature range	-20 °C to 45 °C
---------------------------	-----------------

Product data

Order product name	13T8-6U/MAS/24-835/IF20/P/DIM 10/1
EAN/UPC - Product	046677541866
Order code	929001987504
Numerator - Quantity Per Pack	1
Numerator - Packs per outer box	10
Material Nr. (12NC)	929001987504
Net Weight (Piece)	0.270 kg

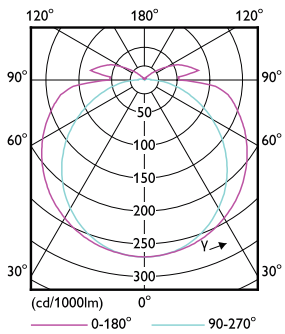
Dimensional drawing



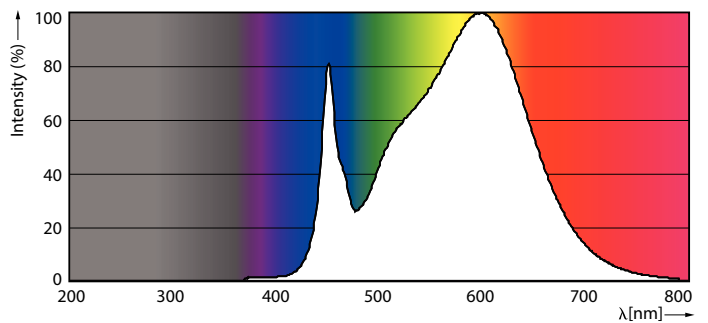
13T8-6U/MAS/24-835/IF20/P/DIM 10/1

Product	D1	D2	A1	A2	A3
13T8-6U/MAS/24-835/IF20/P/DIM 10/1	25.7 mm	28 mm	152 mm	570 mm	27.8 mm

Photometric data

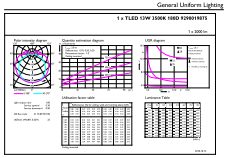


G13 3000K 2000lm



G13 3500K 2000lm

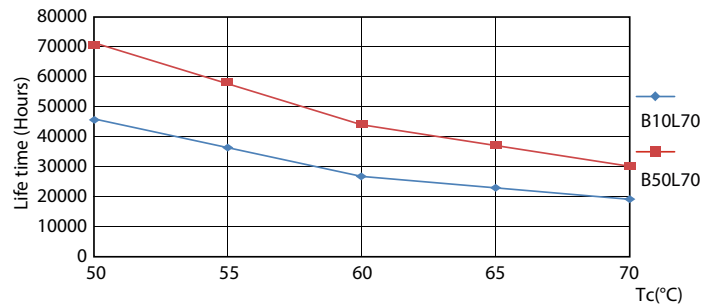
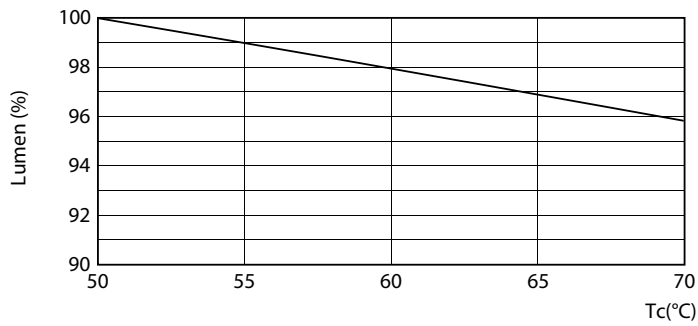
Photometric data



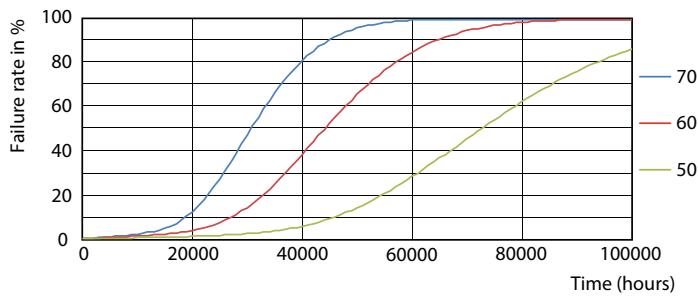
© Philips Lighting B.V. Page 11

G13 3500K 2000lm

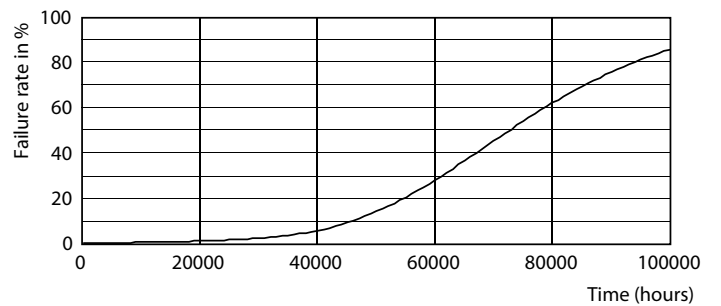
Lifetime



G13 3000K 2000lm



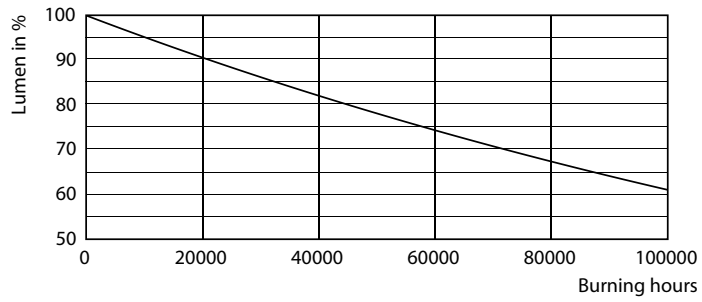
G13 4000K



G13 4000K

G13 4000K

Lifetime



G13 4000K

