



T5

14T5HE/46-835/IF20/G/DIM 10/1

Philips T5 LED tubes offer an affordable, energy saving retrofit solution. The T5 lamps have been engineered to withstand the test of time with a 50,000-hour lifetime and a limited 5-year warranty to back it up. The lighting performance effectively replaces conventional fluorescent T5 HO or T5 HE lamps. Available in either InstantFit (Type A or Type C) or MainsFit (Type B / Ballast bypass), Philips T5 TLEDs provide a variety of options for any application.

Product data

General information		Lamp Current (Max)	
Cap-Base	G5 [G5]	Lamp Current (Min)	350 mA
EU RoHS compliant	Yes	Wattage Equivalent	150 mA
Nominal Lifetime (Nom)	50000 h	Starting Time (Nom)	28 W
Switching Cycle	50000	Warm Up Time to 60% Light (Nom)	0.5 s
Tier	CorePro	UL Type	0.5 s
Light technical		Power Factor (Nom)	Type A - works on ballast
Color Code	835 [CCT of 3500K]	Voltage (Nom)	0.9
Beam Angle (Nom)	200 °	Temperature	
Luminous Flux (Nom)	2000 lm	T-Ambient (Max)	45 °C
Color Designation	White (WH)	T-Ambient (Min)	-20 °C
Correlated Color Temperature (Nom)	3500 K	T-Storage (Range)	-40 °C to 65 °C
Luminous Efficacy (rated) (Nom)	142.00 lm/W	T-Storage (Max)	65 °C
Color Consistency	<6	T-Storage (Min)	-40 °C
Color Rendering Index (Nom)	82	T-Case Maximum (Nom)	70 °C
LLMF At End Of Nominal Lifetime (Nom)	70 %	Controls and dimming	
Operating and electrical		Dimmable	Yes
Input Frequency	40000-110000 Hz		
Power (Nom)	14 W		

T5

Mechanical and housing

Bulb Finish	Frosted
Bulb Material	Glass
Product Length	1200 mm
Bulb Shape	Tube, double-ended

Approval and application

Energy Saving Product	Yes
Approval Marks	UL certificate RoHS compliance DLC compliance
Energy Consumption kWh/1000 h	- kWh
Energy Certifications	DLC Standard

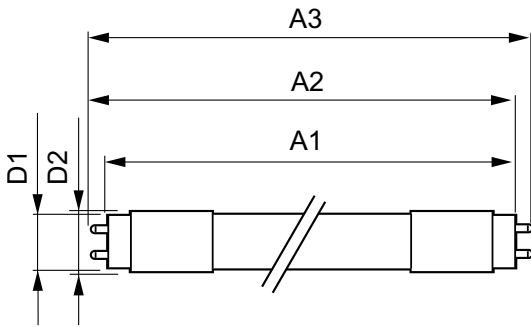
Application conditions

Ambient temperature range	-20 °C to 45 °C
---------------------------	-----------------

Product data

Order product name	14T5HE/46-835/IF20/G/DIM 10/1
EAN/UPC - Product	046677476502
Order code	929001824004
Numerator - Quantity Per Pack	1
Numerator - Packs per outer box	10
Material Nr. (12NC)	929001824004
Net Weight (Piece)	0.146 kg

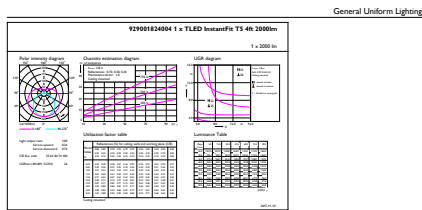
Dimensional drawing



14T5HE/46-835/IF20/G/DIM 10/1

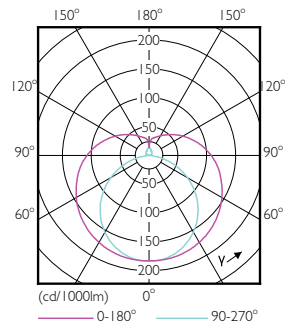
Product	D1	D2	A1	A2	A3
14T5HE/46-835/IF20/G/DIM 10/1	15.3 mm	18.4 mm	1147.8 mm	1154.9 mm	1162 mm

Photometric data



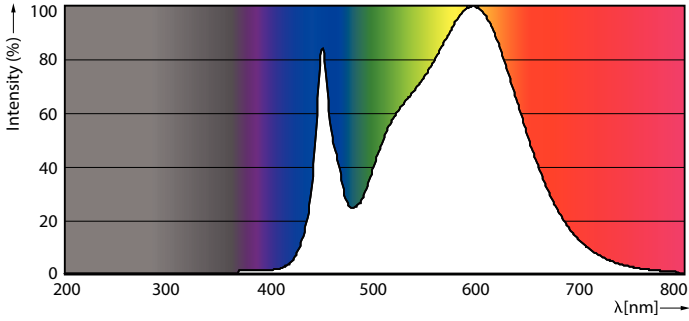
Celux Pro 4.5 Philips Lighting B.V. Page 1/1

LEDtube 14W G5 835 200D DIM IF20



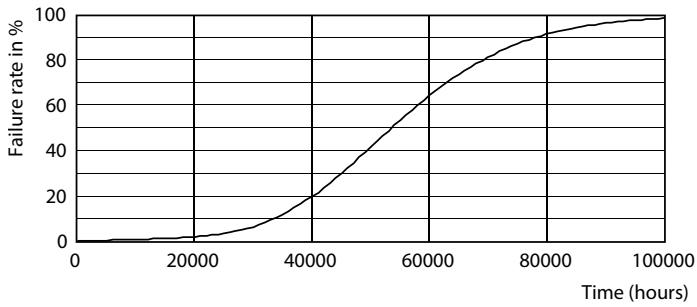
LEDtube 8W G5 830 200D DIM IF10

Photometric data

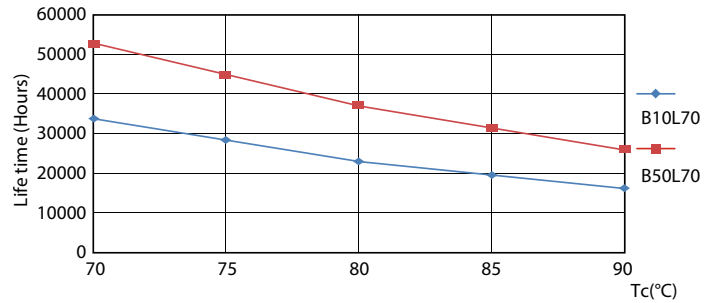


LEDtube 14W G5 835 200D DIM IF20

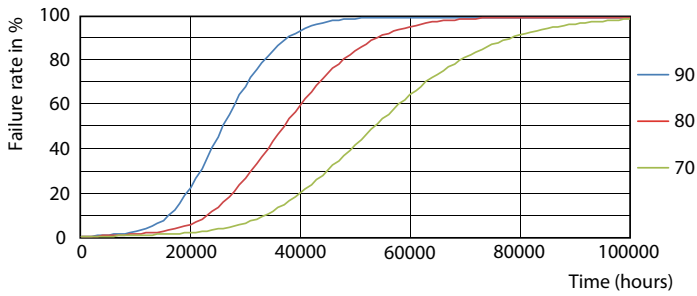
Lifetime



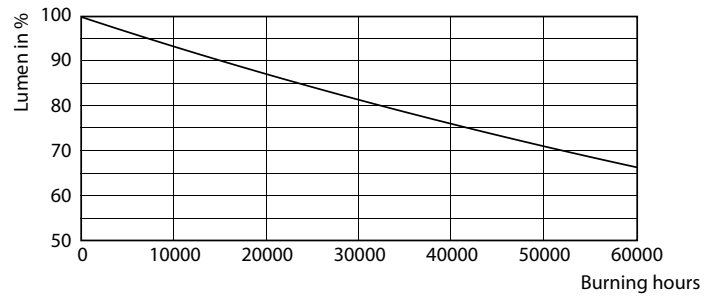
LEDtube 8-14W G5 830-850 200D DIM IF10-21



LEDtube 8-14W G5 830-850 200D DIM IF10-21



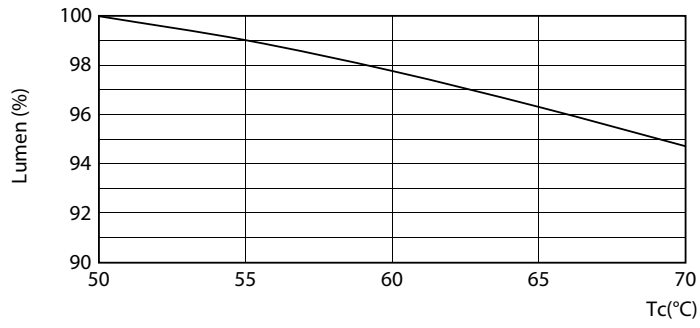
LEDtube 8-14W G5 830-850 200D DIM IF10-21



LEDtube 8-14W G5 830-850 200D DIM IF10-21

T5

Lifetime



LEDtube 8-14W G5 830-850 200D DIM IF10-21

